

## F102A Rabbit pAb

CatalogNo: YT7315

### | Key Features

#### Host Species

- Rabbit

#### Reactivity

- Human, Mouse

#### Applications

- WB

#### MW

- 42kD (Calculated)

#### Isotype

- IgG

### | Recommended Dilution Ratios

WB 1:500-2000

### | Storage

#### Storage\*

-15°C to -25°C/1 year (Do not lower than -25°C)

#### Formulation

Liquid in PBS containing 50% glycerol, 0.5% BSA and 0.02% sodium azide.

### | Basic Information

#### Clonality

Polyclonal

### | Immunogen Information

#### Immunogen

Synthesized peptide derived from human F102A AA range: 72-122

#### Specificity

This antibody detects endogenous levels of F102A at Human/Mouse

### | Target Information

#### Gene name

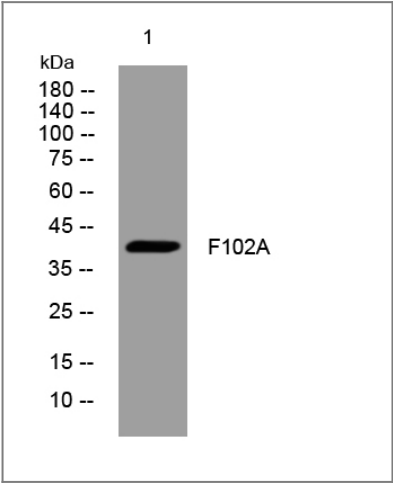
FAM102A C9orf132 EEIG1

**Protein Name** F102A

Organism	Gene ID	UniProt ID
Human	<a href="#">399665;</a>	<a href="#">Q5T9C2;</a>
Mouse	<a href="#">98952;</a>	<a href="#">Q78T81;</a>

**Function** Function:May play a role in estrogen action.,induction:By 17-beta-estradiol but also by a group of natural and synthetic estrogens as well as by estrogenic environmental compounds. Repressed by the antiestrogen 4-hydroxy-tamoxifen.,similarity:Belongs to the FAM102 family.,

| Validation Data



Western blot analysis of lysates from HpeG2 cells, primary antibody was diluted at 1:1000, 4°over night

| Contact information

Orders: order@immunoway.com  
Support: tech@immunoway.com  
Telephone: 877-594-3616 (Toll Free), 408-747-0185  
Website: <http://www.immunoway.com>  
Address: 2200 Ringwood Ave San Jose, CA 95131 USA



Please scan the QR code to access additional product information:  
**F102A Rabbit pAb**