

COLL2 Rabbit pAb

CatalogNo: YT7308

Key Features

Host Species

- Rabbit

Reactivity

- Human, Mouse, Rat

Applications

- IHC, IF

MW

- 11kD (Calculated)

Isotype

- IgG

Recommended Dilution Ratios

IHC 1:50-200

IF 1:50-200

Storage

Storage* -15°C to -25°C/1 year (Do not lower than -25°C)

Formulation Liquid in PBS containing 50% glycerol, 0.5% BSA and 0.02% sodium azide.

Basic Information

Clonality Polyclonal

Immunogen Information

Immunogen Synthesized peptide derived from human COLL2 AA range: 37-87

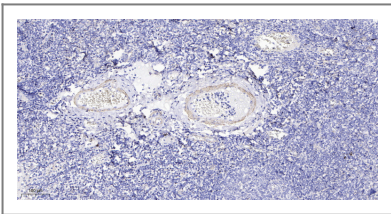
Specificity This antibody detects endogenous levels of COLL2 at Human/Mouse/Rat

Target Information

Gene name CLPSL2 C6orf126 UNQ3045/PRO9861

Protein Name	COLL2		
	Organism	Gene ID	UniProt ID
	Human	389383;	Q6UWE3;
	Mouse	328788;	Q3UW21;
	Rat	689425;	D3ZVN1;
Cellular Localization	Secreted .		
Function	similarity:Belongs to the colipase family.,		

Validation Data



Immunohistochemical analysis of paraffin-embedded human tonsil. 1, Antibody was diluted at 1:200(4° overnight). 2, Tris-EDTA,pH9.0 was used for antigen retrieval. 3,Secondary antibody was diluted at 1:200(room temperature, 30min).

Contact information

Orders: order@immunoway.com
 Support: tech@immunoway.com
 Telephone: 877-594-3616 (Toll Free), 408-747-0185
 Website: <http://www.immunoway.com>
 Address: 2200 Ringwood Ave San Jose, CA 95131 USA



Please scan the QR code
 to access additional
 product information:
COLL2 Rabbit pAb

For Research Use Only. Not for Use in Diagnostic Procedures.

[Antibody](#) | [ELISA Kits](#) | [Protein](#) | [Reagents](#)