

## UIF Rabbit pAb

CatalogNo: YT7306

### Key Features

#### Host Species

- Rabbit

#### Reactivity

- Human, Mouse, Rat

#### Applications

- WB

#### MW

- 35kD (Calculated)

#### Isotype

- IgG

### Recommended Dilution Ratios

WB 1:500-2000

### Storage

**Storage\*** -15°C to -25°C/1 year (Do not lower than -25°C)

**Formulation** Liquid in PBS containing 50% glycerol, 0.5% BSA and 0.02% sodium azide.

### Basic Information

**Clonality** Polyclonal

### Immunogen Information

**Immunogen** Synthesized peptide derived from human UIF AA range: 50-100

**Specificity** This antibody detects endogenous levels of UIF at Human/Mouse/Rat

### Target Information

**Gene name** FYTDD1 UIF

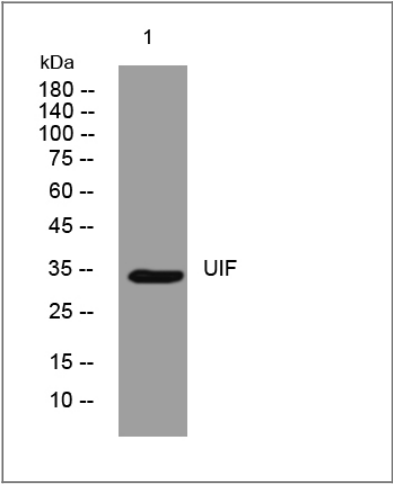
Protein Name      UIF

Organism	Gene ID	UniProt ID
Human	<a href="#">84248;</a>	<a href="#">Q96QD9;</a>
Mouse	<a href="#">69823;</a>	<a href="#">Q91Z49;</a>
Rat	<a href="#">360726;</a>	<a href="#">Q7TQ84;</a>

Cellular Localization      Nucleus, nucleoplasm . Nucleus speckle .

Tissue specificity      Expressed in a wide variety of cancer types.

| Validation Data



Western blot analysis of lysates from DU145 cells, primary antibody was diluted at 1:1000, 4°over night

| Contact information

Orders:            order@immunoway.com  
Support:          tech@immunoway.com  
Telephone:       877-594-3616 (Toll Free), 408-747-0185  
Website:          http://www.immunoway.com  
Address:          2200 Ringwood Ave San Jose, CA 95131 USA



Please scan the QR code to access additional product information:  
**UIF Rabbit pAb**