

SIDT2 Rabbit pAb

CatalogNo: YT7303

Key Features

Host Species

- Rabbit

Reactivity

- Human, Mouse, Rat

Applications

- WB, ELISA, IHC

MW

- 92kD (Calculated)

Isotype

- IgG

Recommended Dilution Ratios

WB 1:500-2000

IHC 1:50-300

ELISA 1:2000-20000

Storage

Storage* -15°C to -25°C/1 year (Do not lower than -25°C)

Formulation Liquid in PBS containing 50% glycerol, 0.5% BSA and 0.02% sodium azide.

Basic Information

Clonality Polyclonal

Immunogen Information

Immunogen Synthesized peptide derived from human SIDT2 AA range: 393-443

Specificity This antibody detects endogenous levels of SIDT2 at Human/Mouse/Rat

Target Information

Gene name SIDT2 CGI-40 PSEC0072 UNQ685/PRO1325

Protein Name SIDT2

Organism	Gene ID	UniProt ID
Human	51092 ;	Q8NBJ9 ;
Mouse	214597 ;	Q8CIF6 ;
Rat	315617 ;	D3ZEH5 ;

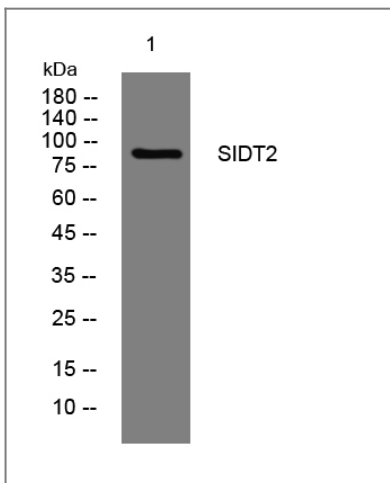
Cellular Localization

Lysosome membrane ; Multi-pass membrane protein . Cell membrane . Mainly localizes to lysosomes and only partly to the plasma membrane (PubMed:28277980). Lysosomal localization is required for SIDT2-mediated intracellular degradation of endogenous RNA (By similarity). .

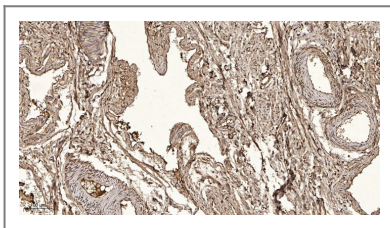
Function

similarity:Belongs to the SID1 family.,

Validation Data



Western blot analysis of lysates from MCF-7 cells, primary antibody was diluted at 1:1000, 4° over night



Immunohistochemical analysis of paraffin-embedded human oophoroma. 1, Antibody was diluted at 1:200(4° overnight). 2, Tris-EDTA,pH9.0 was used for antigen retrieval. 3,Secondary antibody was diluted at 1:200(room temperature, 45min).

Contact information

Orders: order@immunoway.com
Support: tech@immunoway.com
Telephone: 877-594-3616 (Toll Free), 408-747-0185
Website: <http://www.immunoway.com>
Address: 2200 Ringwood Ave San Jose, CA 95131 USA



Please scan the QR code to access additional product information:
SIDT2 Rabbit pAb

