

KCMF1 Rabbit pAb

CatalogNo: YT7292

| Key Features

Host Species

- Rabbit

Reactivity

- Human, Mouse

Applications

- WB

MW

- 42kD (Calculated)

Isotype

- IgG

| Recommended Dilution Ratios

WB 1:500-2000

| Storage

Storage*

-15°C to -25°C/1 year (Do not lower than -25°C)

Formulation

Liquid in PBS containing 50% glycerol, 0.5% BSA and 0.02% sodium azide.

| Basic Information

Clonality

Polyclonal

| Immunogen Information

Immunogen

Synthesized peptide derived from human KCMF1 AA range: 126-176

Specificity

This antibody detects endogenous levels of KCMF1 at Human/Mouse

| Target Information

Gene name

KCMF1 FIGC ZZZ1

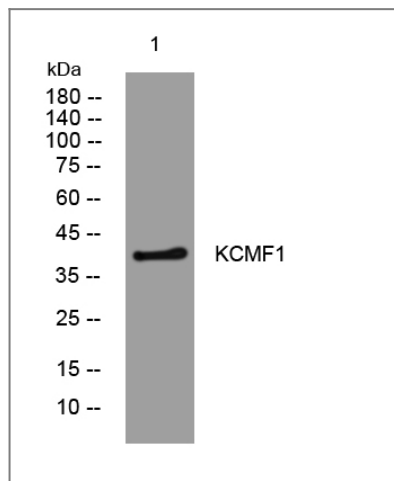
Protein Name KCMF1

Organism	Gene ID	UniProt ID
Human	56888;	Q9P0J7;
Mouse	74287;	Q80UY2;

Tissue specificity Spleen, small intestine, ovary, peripheral blood, lung, kidney and pancreas. Expressed at low levels in the thymus, prostate, testis, colon, heart, brain, placenta and liver.

Function Function:Has intrinsic E3 ubiquitin ligase activity and promotes ubiquitination.,induction:Up-regulated by basic fibroblast growth factor (bFGF) in gastric cancer cells.,similarity:Belongs to the KCMF1 family.,similarity:Contains 1 C2H2-type zinc finger.,similarity:Contains 1 ZZ-type zinc finger.,tissue specificity:Spleen, small intestine, ovary, peripheral blood, lung, kidney and pancreas. Expressed at low levels in the thymus, prostate, testis, colon, heart, brain, placenta and liver.,

Validation Data



Western blot analysis of lysates from MCF-7 cells, primary antibody was diluted at 1:1000, 4°over night

Contact information

Orders: order@immunoway.com
Support: tech@immunoway.com
Telephone: 877-594-3616 (Toll Free), 408-747-0185
Website: <http://www.immunoway.com>
Address: 2200 Ringwood Ave San Jose, CA 95131 USA



Please scan the QR code to access additional product information:
KCMF1 Rabbit pAb