

GDC Rabbit pAb

CatalogNo: YT7288

| Key Features

Host Species

- Rabbit

Reactivity

- Human, Mouse, Rat

Applications

- WB

MW

- 37kD (Calculated)

Isotype

- IgG

| Recommended Dilution Ratios

WB 1:500-2000

| Storage

Storage*

-15°C to -25°C/1 year (Do not lower than -25°C)

Formulation

Liquid in PBS containing 50% glycerol, 0.5% BSA and 0.02% sodium azide.

| Basic Information

Clonality

Polyclonal

| Immunogen Information

Immunogen

Synthesized peptide derived from human GDC AA range: 241-291

Specificity

This antibody detects endogenous levels of GDC at Human/Mouse/Rat

| Target Information

Gene name

SLC25A16 GDA

Protein Name GDC

Organism	Gene ID	UniProt ID
Human	8034;	P16260;
Mouse	73132;	Q8C0K5;
Rat		P16261;

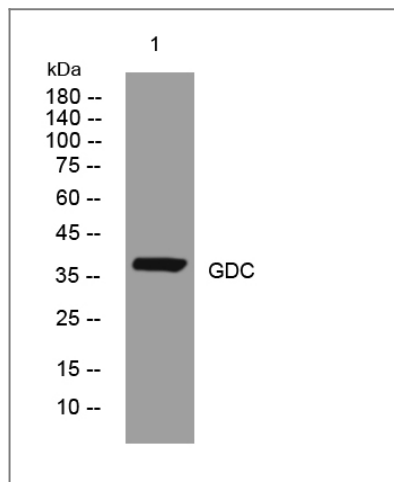
Cellular Localization

Mitochondrion inner membrane ; Multi-pass membrane protein .

Function

Disease:Possible role in Graves disease. This protein is recognized by IgG from patients with active Graves disease.,Function:Required for the accumulation of coenzyme A in the mitochondrial matrix.,similarity:Belongs to the mitochondrial carrier family.,similarity:Contains 3 Solcar repeats.,

Validation Data



Western blot analysis of lysates from MDA-MB cells, primary antibody was diluted at 1:1000, 4°over night

Contact information

Orders: order@immunoway.com
Support: tech@immunoway.com
Telephone: 877-594-3616 (Toll Free), 408-747-0185
Website: <http://www.immunoway.com>
Address: 2200 Ringwood Ave San Jose, CA 95131 USA



Please scan the QR code to access additional product information:
GDC Rabbit pAb