

HDBP1 Rabbit pAb

CatalogNo: YT7282

Key Features

Host Species

- Rabbit

Reactivity

- Human, Mouse

Applications

- WB

MW

- 20kD (Calculated)

Isotype

- IgG

Recommended Dilution Ratios

WB 1:500-2000

Storage

Storage* -15°C to -25°C/1 year (Do not lower than -25°C)

Formulation Liquid in PBS containing 50% glycerol, 0.5% BSA and 0.02% sodium azide.

Basic Information

Clonality Polyclonal

Immunogen Information

Immunogen Synthesized peptide derived from human HDBP1 AA range: 1-51

Specificity This antibody detects endogenous levels of HDBP1 at Human/Mouse

Target Information

Gene name GPIHBP1 HBP1

Protein Name

HDBP1

Organism**Gene ID****UniProt ID**

Human

[338328;](#)[Q8IV16;](#)

Mouse

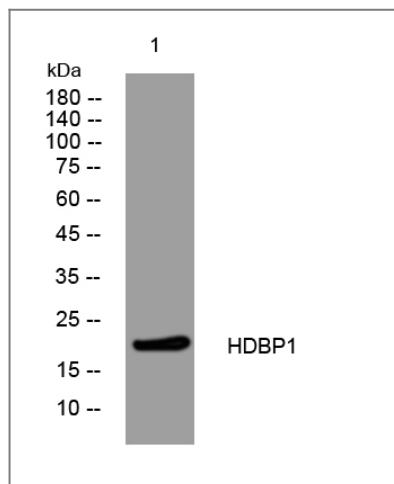
[68453;](#)[Q9D1N2;](#)**Cellular Localization**

Apical cell membrane ; Lipid-anchor, GPI-anchor . Basolateral cell membrane ; Lipid-anchor, GPI-anchor . Cell membrane ; Lipid-anchor, GPI-anchor .

Function

Caution:The mouse ortholog has been suggested to be a GPI-anchored protein, but no GPI-anchor is detected by prediction methods.,Function:Plays a key role in the lipolytic processing of chylomicrons.,polymorphism:The missense variant Arg-56 may be associated with severe hypertriglyceridemia and chylomicronemia.,similarity:Contains 1 UPAR/Ly6 domain.,subcellular location:Localized at the cell surface.,subunit:Binds with high affinity to high-density lipoprotein (HDL) (By similarity). Binds to lipoprotein lipase (LPL), chylomicrons and APOA5.,

Validation Data



Western blot analysis of lysates from DU145 cells, primary antibody was diluted at 1:1000, 4° over night

Contact information

Orders: order@immunoway.com
Support: tech@immunoway.com
Telephone: 877-594-3616 (Toll Free), 408-747-0185
Website: <http://www.immunoway.com>
Address: 2200 Ringwood Ave San Jose, CA 95131 USA



Please scan the QR code to access additional product information:
HDBP1 Rabbit pAb