

TIDC1 Rabbit pAb

CatalogNo: YT7279

Key Features

Host Species

- Rabbit

Reactivity

- Human, Mouse, Rat

Applications

- WB, ELISA, IHC

MW

- 31kD (Calculated)

Isotype

- IgG

Recommended Dilution Ratios

WB 1:500-2000

IHC 1:50-300

ELISA 1:2000-20000

Storage

Storage* -15°C to -25°C/1 year (Do not lower than -25°C)

Formulation Liquid in PBS containing 50% glycerol, 0.5% BSA and 0.02% sodium azide.

Basic Information

Clonality Polyclonal

Immunogen Information

Immunogen Synthesized peptide derived from human TIDC1 AA range: 74-124

Specificity This antibody detects endogenous levels of TIDC1 at Human/Mouse/Rat

Target Information

Gene name TIMMDC1 C3orf1 UNQ247/PRO284

Protein Name TIDC1

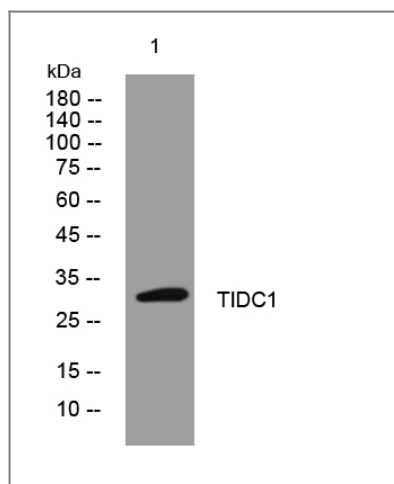
Organism	Gene ID	UniProt ID
Human	51300;	Q9NPL8;
Mouse	76916;	Q8BUY5;
Rat	303922;	Q6AY94;

Cellular Localization Mitochondrion membrane ; Multi-pass membrane protein .

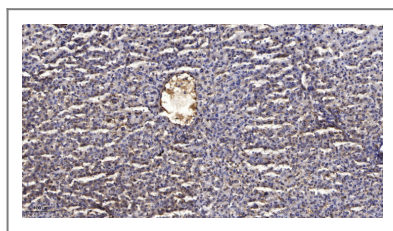
Tissue specificity Generalized expression enhanced in heart and skeletal muscle.

Function tissue specificity:Generalized expression enhanced in heart and skeletal muscle.,

Validation Data



Western blot analysis of lysates from VEC cells, primary antibody was diluted at 1:1000, 4° over night



Immunohistochemical analysis of paraffin-embedded human liver cancer. 1, Antibody was diluted at 1:200(4° overnight). 2, Tris-EDTA,pH9.0 was used for antigen retrieval. 3,Secondary antibody was diluted at 1:200(room temperature, 45min).

Contact information

Orders: order@immunoway.com
Support: tech@immunoway.com
Telephone: 877-594-3616 (Toll Free), 408-747-0185
Website: <http://www.immunoway.com>
Address: 2200 Ringwood Ave San Jose, CA 95131 USA



Please scan the QR code to access additional product information:
TIDC1 Rabbit pAb

