

AMELY Rabbit pAb

CatalogNo: YT7268

Key Features

Host Species

- Rabbit

Reactivity

- Human

Applications

- WB

MW

- 23kD (Calculated)

Isotype

- IgG

Recommended Dilution Ratios

WB 1:500-2000

Storage

Storage* -15°C to -25°C/1 year(Do not lower than -25°C)

Formulation Liquid in PBS containing 50% glycerol, 0.5% BSA and 0.02% sodium azide.

Basic Information

Clonality Polyclonal

Immunogen Information

Immunogen Synthesized peptide derived from human AMELY.AA range 17-57

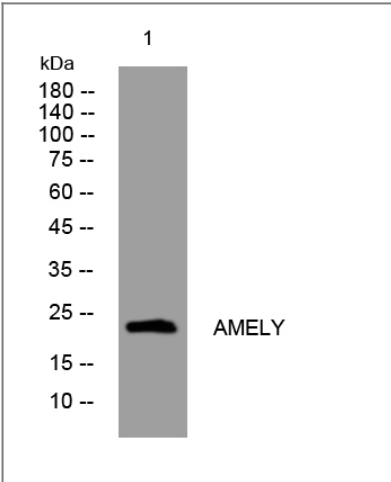
Specificity This antibody detects endogenous levels of AMELY at Human

Target Information

Gene name AMELY AMGL AMGY

Protein Name	AMELY		
	Organism	Gene ID	UniProt ID
	Human	266;	Q99218;
Cellular Localization	Secreted, extracellular space, extracellular matrix.		
Function	developmental stage:Transiently but abundantly expressed by ameloblasts during tooth development. Amelogenin is the predominant protein in developing dental enamel.,Function:Plays a role in biomineralization. Seems to regulate the formation of crystallites during the secretory stage of tooth enamel development. Thought to play a major role in the structural organization and mineralization of developing enamel.,miscellaneous:This isoform is encoded on the Y chromosome.,similarity:Belongs to the amelogenin family.,		

| Validation Data



Western blot analysis of lysates from HuvEc cells, primary antibody was diluted at 1:1000, 4°over night

| Contact information

Orders: order@immunoway.com
Support: tech@immunoway.com
Telephone: 877-594-3616 (Toll Free), 408-747-0185
Website: http://www.immunoway.com
Address: 2200 Ringwood Ave San Jose, CA 95131 USA



Please scan the QR code to access additional product information:
AMELY Rabbit pAb