

TSYL1 Rabbit pAb

CatalogNo: YT7263

Key Features

Host Species

- Rabbit

Reactivity

- Human, Mouse

Applications

- WB

MW

- 48kD (Calculated)

Isotype

- IgG

Recommended Dilution Ratios

WB 1:500-2000

Storage

Storage*

-15°C to -25°C/1 year (Do not lower than -25°C)

Formulation

Liquid in PBS containing 50% glycerol, 0.5% BSA and 0.02% sodium azide.

Basic Information

Clonality

Polyclonal

Immunogen Information

Immunogen

Synthesized peptide derived from human TSYL1 AA range: 211-261

Specificity

This antibody detects endogenous levels of TSYL1 at Human/Mouse

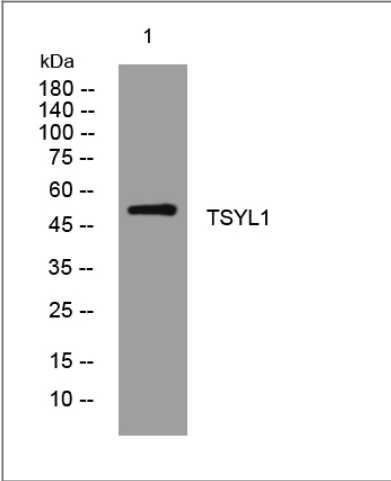
Target Information

Gene name

TSPYL1 TSPYL

Protein Name	TSYL1		
	Organism	Gene ID	UniProt ID
	Human	7259;	Q9H0U9;
	Mouse	22110;	O88852;
Cellular Localization	Nucleus, nucleolus .		
Tissue specificity	Expressed in testis, ovary, liver, spleen, brain, kidney, prostate, lung, liver, and heart.		
Function	<p>Disease:Defects in TSPYL1 are the cause of sudden infant death with dysgenesis of the testes syndrome (SIDDT) [MIM:608800]. SIDDT is an autosomal recessive disorder. Affected infants appear normal at birth, develop signs of viscerautonomic dysfunction early in life, and die before 12 months of age of abrupt cardiorespiratory arrest. Features included bradycardia, hypothermia, severe gastroesophageal reflux, laryngospasm, bronchospasm, and abnormal cardiorespiratory patterns during sleep. Genotypic males with SIDDT had fetal testicular dysgenesis and ambiguous genitalia, with findings such as intraabdominal testes, dysplastic testes, deficient fetal testosterone production, fusion and rugation of the gonadal sac, and partial development of the penile shaft. Female sexual development was normal. Affected infants had an unusual staccato cry, similar to the cry of a goat.,similarity:Belongs to the nucleosome assembly protein (NAP) family.,tissue specificity:Expressed in testis, ovary, liver, spleen, brain, kidney, prostate, lung, liver, and heart.,</p>		

Validation Data



Western blot analysis of lysates from SH-SY5Y cells, primary antibody was diluted at 1:1000, 4°over night

Contact information

Orders: order@immunoway.com
Support: tech@immunoway.com
Telephone: 877-594-3616 (Toll Free), 408-747-0185
Website: http://www.immunoway.com
Address: 2200 Ringwood Ave San Jose, CA 95131 USA



Please scan the QR code
to access additional
product information:
TSYL1 Rabbit pAb

For Research Use Only. Not for Use in Diagnostic Procedures.

[Antibody](#) | [ELISA Kits](#) | [Protein](#) | [Reagents](#)