

## TRM13 Rabbit pAb

CatalogNo: YT7248

### | Key Features

#### Host Species

- Rabbit

#### Reactivity

- Human, Mouse

#### Applications

- WB

#### MW

- 53kD (Calculated)

#### Isotype

- IgG

### | Recommended Dilution Ratios

WB 1:500-2000

### | Storage

**Storage\*** -15°C to -25°C/1 year (Do not lower than -25°C)

**Formulation** Liquid in PBS containing 50% glycerol, 0.5% BSA and 0.02% sodium azide.

### | Basic Information

**Clonality** Polyclonal

### | Immunogen Information

**Immunogen** Synthesized peptide derived from human TRM13 AA range: 331-381

**Specificity** This antibody detects endogenous levels of TRM13 at Human/Mouse

### | Target Information

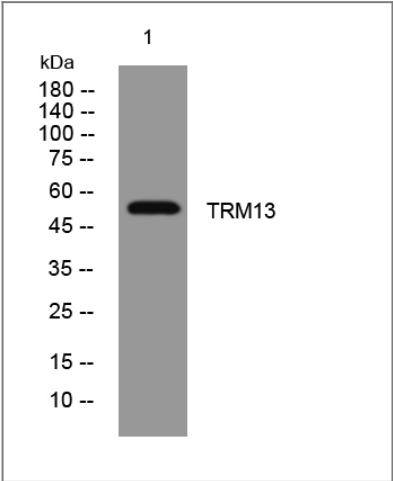
**Gene name** TRMT13 CCDC76

Protein Name TRM13

Organism	Gene ID	UniProt ID
Human	<a href="#">54482;</a>	<a href="#">Q9NUP7;</a>
Mouse	<a href="#">229780;</a>	<a href="#">Q8BYH3;</a>

**Function** Catalytic activity:S-adenosyl-L-methionine + rRNA = S-adenosyl-L-homocysteine + rRNA containing 2'-O-methyluridine.,Function:Specifically methylates guanosine-4 in various tRNAs with a Gly(CCG), His or Pro signature.,similarity:Belongs to the TRM13 family.,similarity:Contains 1 CHHC-type zinc finger.,

Validation Data



Western blot analysis of lysates from SH-SY5Y cells, primary antibody was diluted at 1:1000, 4°over night

Contact information

Orders: order@immunoway.com  
Support: tech@immunoway.com  
Telephone: 877-594-3616 (Toll Free), 408-747-0185  
Website: http://www.immunoway.com  
Address: 2200 Ringwood Ave San Jose, CA 95131 USA



Please scan the QR code to access additional product information:  
**TRM13 Rabbit pAb**