

NSUN7 Rabbit pAb

CatalogNo: YT7247

Key Features

Host Species

- Rabbit

Reactivity

- Human, Mouse

Applications

- WB

MW

- 79kD (Calculated)

Isotype

- IgG

Storage

Storage* -15°C to -25°C/1 year (Do not lower than -25°C)

Formulation Liquid in PBS containing 50% glycerol, 0.5% BSA and 0.02% sodium azide.

Recommended Dilution Ratios

WB 1:500-2000

Basic Information

Clonality Polyclonal

Immunogen Information

Immunogen Synthesized peptide derived from human NSUN7 AA range: 139-189

Specificity This antibody detects endogenous levels of NSUN7 at Human/Mouse

Target Information

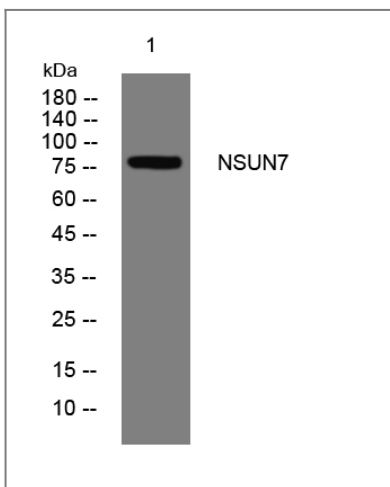
Gene name NSUN7

Protein Name NSUN7

Organism	Gene ID	UniProt ID
Human		Q8NE18 ;
Mouse	70918 ;	Q14AW5 ;

Function Function:May have S-adenosyl-L-methionine-dependent methyl-transferase activity
.,similarity:Belongs to the methyltransferase superfamily. RsmB/NOP family.,

Validation Data



Western blot analysis of lysates from MDA-MB cells, primary antibody was diluted at 1:1000, 4°over night

Contact information

Orders: order@immunoway.com
Support: tech@immunoway.com
Telephone: 877-594-3616 (Toll Free), 408-747-0185
Website: <http://www.immunoway.com>
Address: 2200 Ringwood Ave San Jose, CA 95131 USA



Please scan the QR code to access additional product information:
NSUN7 Rabbit pAb

For Research Use Only. Not for Use in Diagnostic Procedures.

[Antibody](#) | [ELISA Kits](#) | [Protein](#) | [Reagents](#)