

BACD3 Rabbit pAb

CatalogNo: YT7244

Key Features

Host Species

- Rabbit

Reactivity

- Human, Mouse, Rat

Applications

- WB

MW

- 34kD (Calculated)

Isotype

- IgG

Storage

Storage* -15°C to -25°C/1 year (Do not lower than -25°C)

Formulation Liquid in PBS containing 50% glycerol, 0.5% BSA and 0.02% sodium azide.

Recommended Dilution Ratios

WB 1:500-2000

Basic Information

Clonality Polyclonal

Immunogen Information

Immunogen Synthesized peptide derived from human BACD3 AA range: 67-117

Specificity This antibody detects endogenous levels of BACD3 at Human/Mouse/Rat

Target Information

Gene name KCTD10 ULR061 MSTP028

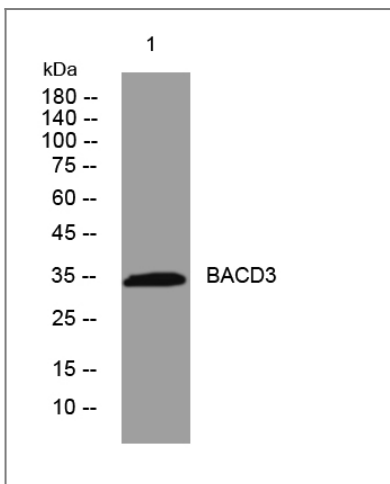
Protein Name BACD3

Organism	Gene ID	UniProt ID
Human	83892 ;	Q9H3F6 ;
Mouse	330171 ;	Q922M3 ;
Rat	494521 ;	Q7TPL3 ;

Cellular Localization Nucleus .

Function similarity:Belongs to the KCTD10/KCTD13/TNFAIP1 family.,similarity:Contains 1 BTB (POZ) domain.,subunit:Interacts with PCNA and DNA polymerase delta subunit 2/POLD2.,

Validation Data



Western blot analysis of lysates from MCF-7 cells, primary antibody was diluted at 1:1000, 4°over night

Contact information

Orders: order@immunoway.com
Support: tech@immunoway.com
Telephone: 877-594-3616 (Toll Free), 408-747-0185
Website: <http://www.immunoway.com>
Address: 2200 Ringwood Ave San Jose, CA 95131 USA



Please scan the QR code to access additional product information:
BACD3 Rabbit pAb