

## GRCR1 Rabbit pAb

CatalogNo: YT7241

### | Key Features

#### Host Species

- Rabbit

#### Reactivity

- Human, Mouse

#### Applications

- WB

#### MW

- 32kD (Calculated)

#### Isotype

- IgG

### | Recommended Dilution Ratios

WB 1:500-2000

### | Storage

**Storage\*** -15°C to -25°C/1 year (Do not lower than -25°C)

**Formulation** Liquid in PBS containing 50% glycerol, 0.5% BSA and 0.02% sodium azide.

### | Basic Information

**Clonality** Polyclonal

### | Immunogen Information

**Immunogen** Synthesized peptide derived from human GRCR1 AA range: 132-182

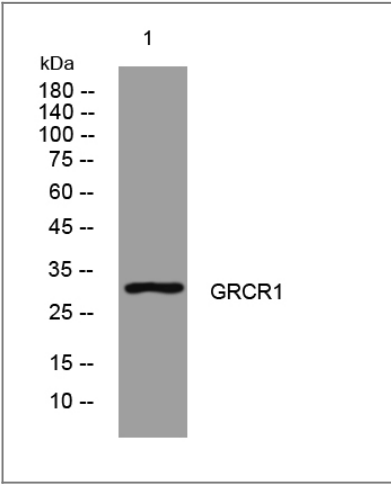
**Specificity** This antibody detects endogenous levels of GRCR1 at Human/Mouse

### | Target Information

**Gene name** GRXCR1 DFNB25

<b>Protein Name</b>	GRCR1		
	<b>Organism</b>	<b>Gene ID</b>	<b>UniProt ID</b>
	Human	<a href="#">389207;</a>	<a href="#">A8MXD5;</a>
	Mouse	<a href="#">433899;</a>	<a href="#">Q50H32;</a>
<b>Cellular Localization</b>	Cell projection, stereocilium . Cell projection, microvillus . Cell projection, kinocilium . In the inner ear, localized to stereocilia, apical microvilli of sensory cells and kinocilia. .		
<b>Tissue specificity</b>	Expressed at low levels in adult lung, brain and duodenum with moderate levels in testis. Highly expressed in fetal cochlea.		
<b>Function</b>	similarity:Belongs to the GRXCR1 family.,similarity:Contains 1 glutaredoxin domain.,		

## Validation Data



Western blot analysis of lysates from PC-12 cells, primary antibody was diluted at 1:1000, 4°over night

## Contact information

Orders: [order@immunoway.com](mailto:order@immunoway.com)  
 Support: [tech@immunoway.com](mailto:tech@immunoway.com)  
 Telephone: 877-594-3616 (Toll Free), 408-747-0185  
 Website: <http://www.immunoway.com>  
 Address: 2200 Ringwood Ave San Jose, CA 95131 USA



Please scan the QR code  
 to access additional  
 product information:  
**GRCR1 Rabbit pAb**