

## CU082 Rabbit pAb

CatalogNo: YT7236

### Key Features

#### Host Species

- Rabbit

#### Reactivity

- Human

#### Applications

- IHC,IF

#### MW

- 7kD (Calculated)

#### Isotype

- IgG

### Storage

**Storage\*** -15°C to -25°C/1 year(Do not lower than -25°C)

**Formulation** Liquid in PBS containing 50% glycerol, 0.5% BSA and 0.02% sodium azide.

### Recommended Dilution Ratios

IHC 1:50-200

IF 1:50-200

### Basic Information

**Clonality** Polyclonal

### Immunogen Information

**Immunogen** Synthesized peptide derived from human CU082 AA range: 12-62

**Specificity** This antibody detects endogenous levels of CU082 at Human

### Target Information

**Gene name** LINC00310 C21orf82 NCRNA00310

**Protein Name** CU082

**Organism**

**Gene ID**

**UniProt ID**

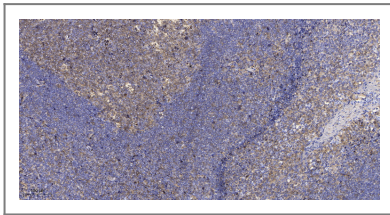
Human

[P59036;](#)

**Tissue specificity** Widely expressed; not found in breast.

**Function** tissue specificity:Widely expressed; not found in breast.,

## Validation Data



Immunohistochemical analysis of paraffin-embedded human tonsil. 1, Antibody was diluted at 1:200(4° overnight). 2, Tris-EDTA,pH9.0 was used for antigen retrieval. 3,Secondary antibody was diluted at 1:200(room temperature, 30min).

## Contact information

Orders: [order@immunoway.com](mailto:order@immunoway.com)  
Support: [tech@immunoway.com](mailto:tech@immunoway.com)  
Telephone: 877-594-3616 (Toll Free), 408-747-0185  
Website: <http://www.immunoway.com>  
Address: 2200 Ringwood Ave San Jose, CA 95131 USA



Please scan the QR code to access additional product information:  
**CU082 Rabbit pAb**

For Research Use Only. Not for Use in Diagnostic Procedures.

[Antibody](#) | [ELISA Kits](#) | [Protein](#) | [Reagents](#)