

RN207 Rabbit pAb

CatalogNo: YT7235

Key Features

Host Species

- Rabbit

Reactivity

- Human, Mouse

Applications

- WB, ELISA, IHC

MW

- 70kD (Calculated)

Isotype

- IgG

Recommended Dilution Ratios

WB 1:500-2000

IHC 1:50-300

ELISA 1:2000-20000

Storage

Storage* -15°C to -25°C/1 year (Do not lower than -25°C)

Formulation Liquid in PBS containing 50% glycerol, 0.5% BSA and 0.02% sodium azide.

Basic Information

Clonality Polyclonal

Immunogen Information

Immunogen Synthesized peptide derived from human RN207 AA range: 407-457

Specificity This antibody detects endogenous levels of RN207 at Human/Mouse

Target Information

Gene name RNF207 C1orf188

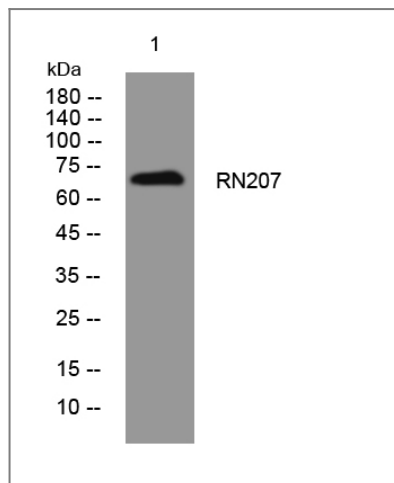
Protein Name RN207

Organism	Gene ID	UniProt ID
Human	388591 ;	Q6ZRF8 ;
Mouse	433809 ;	Q3V3A7 ;

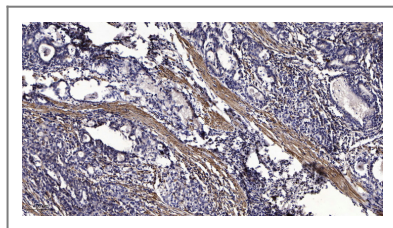
Cellular Localization Cytoplasm . Probably located in the endoplasmic reticulum and/or possibly the cis-Golgi apparatus. .

Function similarity:Contains 1 B box-type zinc finger.,similarity:Contains 1 RING-type zinc finger.,

Validation Data



Western blot analysis of lysates from HpeG2 cells, primary antibody was diluted at 1:1000, 4° over night



Immunohistochemical analysis of paraffin-embedded human Gastric adenocarcinoma. 1, Antibody was diluted at 1:200(4° overnight). 2, Tris-EDTA,pH9.0 was used for antigen retrieval. 3,Secondary antibody was diluted at 1:200(room temperature, 45min).

Contact information

Orders: order@immunoway.com
Support: tech@immunoway.com
Telephone: 877-594-3616 (Toll Free), 408-747-0185
Website: <http://www.immunoway.com>
Address: 2200 Ringwood Ave San Jose, CA 95131 USA



Please scan the QR code to access additional product information:
RN207 Rabbit pAb

