

## MPZL2 Rabbit pAb

CatalogNo: YT7231

### Key Features

**Host Species**

- Rabbit

**Reactivity**

- Human, Mouse

**Applications**

- WB, IHC

**MW**

- 24kD (Calculated)

**Isotype**

- IgG

### Recommended Dilution Ratios

**WB 1:500-2000****IHC 1:50-300**

### Storage

**Storage\***

-15°C to -25°C/1 year (Do not lower than -25°C)

**Formulation**

Liquid in PBS containing 50% glycerol, 0.5% BSA and 0.02% sodium azide.

### Basic Information

**Clonality**

Polyclonal

### Immunogen Information

**Immunogen**

Synthesized peptide derived from human MPZL2 AA range: 144-194

**Specificity**

This antibody detects endogenous levels of MPZL2 at Human/Mouse

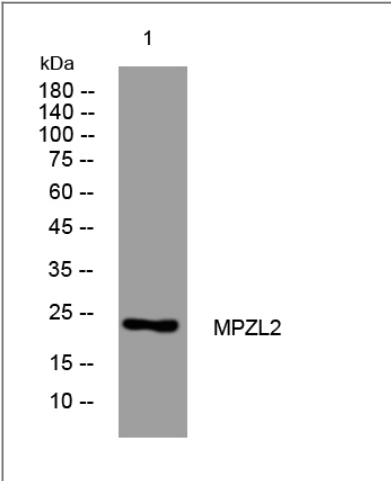
### Target Information

**Gene name**

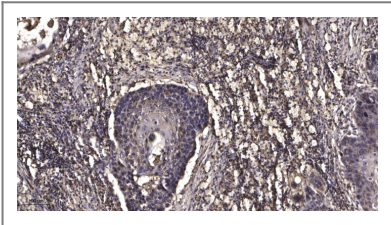
MPZL2 EVA EVA1 UNQ606/PRO1192

Protein Name	MPZL2		
	Organism	Gene ID	UniProt ID
	Human	<a href="#">10205;</a>	<a href="#">O60487;</a>
	Mouse		<a href="#">O70255;</a>
Cellular Localization	Membrane ; Single-pass type I membrane protein .		
Tissue specificity	Widely expressed. In fetal tissues, highest expression in the inner ear. In adult tissues, highest levels in thymus and lung.		
Function	Function:Mediates homophilic cell-cell adhesion.,similarity:Belongs to the myelin P0 protein family.,similarity:Contains 1 Ig-like V-type (immunoglobulin-like) domain.,tissue specificity:Expressed in thymocytes and thymic stromal cells; expression elevated in some T-cell leukemias.,		

Validation Data



Western blot analysis of lysates from U2OS cells, primary antibody was diluted at 1:1000, 4°over night



Immunohistochemical analysis of paraffin-embedded human Squamous cell carcinoma of lung. 1, Antibody was diluted at 1:200(4° overnight). 2, Tris-EDTA,pH9.0 was used for antigen retrieval. 3,Secondary antibody was diluted at 1:200(room temperature, 45min).

Contact information

Orders: order@immunoway.com  
Support: tech@immunoway.com  
Telephone: 877-594-3616 (Toll Free), 408-747-0185  
Website: http://www.immunoway.com  
Address: 2200 Ringwood Ave San Jose, CA 95131 USA



Please scan the QR code  
to access additional  
product information:  
**MPZL2 Rabbit pAb**

---

For Research Use Only. Not for Use in Diagnostic Procedures.

[Antibody](#) | [ELISA Kits](#) | [Protein](#) | [Reagents](#)