

TGM5 Rabbit pAb

CatalogNo: YT7219

| Key Features

Host Species

- Rabbit

Reactivity

- Human, Mouse

Applications

- WB

MW

- 79kD (Calculated)

Isotype

- IgG

| Recommended Dilution Ratios

WB 1:500-2000

| Storage

Storage*

-15°C to -25°C/1 year (Do not lower than -25°C)

Formulation

Liquid in PBS containing 50% glycerol, 0.5% BSA and 0.02% sodium azide.

| Basic Information

Clonality

Polyclonal

| Immunogen Information

Immunogen

Synthesized peptide derived from human TGM5 AA range: 448-498

Specificity

This antibody detects endogenous levels of TGM5 at Human/Mouse

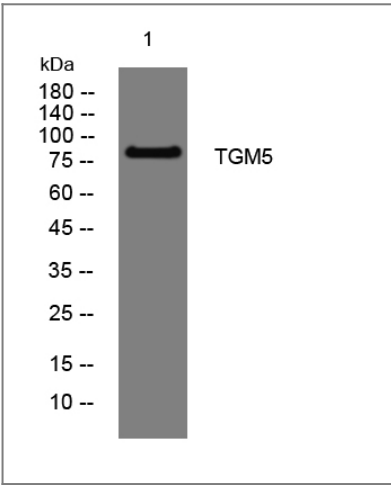
| Target Information

Gene name

TGM5 TGMX

Protein Name	TGM5		
	Organism	Gene ID	UniProt ID
	Human	9333;	O43548;
	Mouse	74176;	Q9D7I9;
Cellular Localization	Cytoplasm . Associated with intermediate filaments.		
Tissue specificity	Expressed in foreskin keratinocytes.		
Function	<p>Catalytic activity:Protein glutamine + alkylamine = protein N(5)-alkylglutamine + NH(3).,Caution:The sequence shown here is derived from an Ensembl automatic analysis pipeline and should be considered as preliminary data.,cofactor:Binds 1 calcium ion per subunit.,Disease:Defects in TGM5 are a cause of peeling skin syndrome acral type (APSS) [MIM:609796, 270300]. Peeling skin syndrome (PSS) is an autosomal recessive genodermatosis characterized by the continuous shedding of the outer layers of the epidermis from birth and throughout life. In some cases of PSS, skin peeling is accompanied by erythema, vesicular lesions, or, in rare cases, other ectodermal features, like fragile hair and nail abnormalities. Two main subtypes, noninflammatory type A and inflammatory type B, have been suggested. However, it is clear from the dermatology literature that there are additional subtypes. In some families, an acral form of PSS (APSS) has been reported, in which skin peeling is strictly limited to the dorsa of the hands and feet, and, again, ultrastructural and histological analysis shows a level of blistering high in the epidermis at the stratum granulosum-stratum corneum junction.,Function:Catalyzes the cross-linking of proteins and the conjugation of polyamines to proteins. Contributes to the formation of the cornified cell envelope of keratinocytes.,induction:By tetradecanoylphorbolacetate (TPA) and calcium in NHEK cells.,similarity:Belongs to the transglutaminase superfamily. Transglutaminase family.,subcellular location:Associated with intermediate filaments.,tissue specificity:Expressed in foreskin keratinocytes.,</p>		

Validation Data



Western blot analysis of lysates from U2OS cells, primary antibody was diluted at 1:1000, 4°over night

Contact information

Orders: order@immunoway.com
Support: tech@immunoway.com
Telephone: 877-594-3616 (Toll Free), 408-747-0185
Website: http://www.immunoway.com
Address: 2200 Ringwood Ave San Jose, CA 95131 USA



Please scan the QR code
to access additional
product information:
TGM5 Rabbit pAb

For Research Use Only. Not for Use in Diagnostic Procedures.

[Antibody](#) | [ELISA Kits](#) | [Protein](#) | [Reagents](#)