

## SIA4A Rabbit pAb

CatalogNo: YT7218

### Key Features

#### Host Species

- Rabbit

#### Reactivity

- Human, Mouse

#### Applications

- WB, ELISA, IHC

#### MW

- 37kD (Calculated)

#### Isotype

- IgG

### Recommended Dilution Ratios

**WB 1:500-2000**

**IHC 1:50-300**

**ELISA 1:2000-20000**

### Storage

**Storage\*** -15°C to -25°C/1 year (Do not lower than -25°C)

**Formulation** Liquid in PBS containing 50% glycerol, 0.5% BSA and 0.02% sodium azide.

### Basic Information

**Clonality** Polyclonal

### Immunogen Information

**Immunogen** Synthesized peptide derived from human SIA4A AA range: 189-239

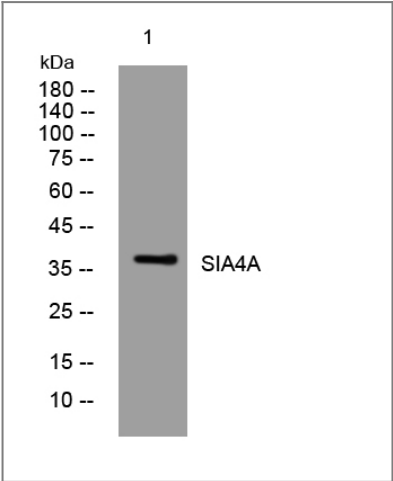
**Specificity** This antibody detects endogenous levels of SIA4A at Human/Mouse

### Target Information

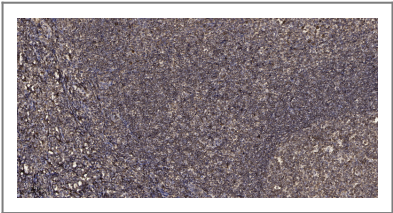
**Gene name** ST3GAL1 SIAT4 SIAT4A

Protein Name	SIA4A		
	Organism	Gene ID	UniProt ID
	Human	<a href="#">6482;</a>	<a href="#">Q11201;</a>
	Mouse	<a href="#">20442;</a>	<a href="#">P54751;</a>
Cellular Localization	Golgi apparatus, Golgi stack membrane ; Single-pass type II membrane protein . Golgi apparatus, trans-Golgi network membrane ; Single-pass type II membrane protein . Secreted. Membrane-bound form in medial and trans cisternae of Golgi (PubMed:9182658). Secreted into the body fluid.		
Tissue specificity	Expressed in several tissues. Highest expression in lung, liver, skeletal muscle, kidney, pancreas, spleen and placenta.		
Function	Catalytic activity: CMP-N-acetylneuraminate + beta-D-galactosyl-1,3-N-acetyl-alpha-D-galactosaminyl-R = CMP + alpha-N-acetylneuraminyl-2,3-beta-D-galactosyl-1,3-N-acetyl-alpha-D-galactosaminyl-R.,Function:It may be responsible for the synthesis of the sequence NeuAc-alpha-2,3-Gal-beta-1,3-GalNAc- found on sugar chains O-linked to Thr or Ser and also as a terminal sequence on certain gangliosides. SIAT4A and SIAT4B sialylate the same acceptor substrates but exhibit different Km values.,online information:GlycoGene database,online information:ST3Gal I,pathway:Protein modification; protein glycosylation.,PTM:The soluble form derives from the membrane form by proteolytic processing.,similarity:Belongs to the glycosyltransferase 29 family.,subcellular location:Membrane-bound form in trans cisternae of Golgi. Secreted into the body fluid.,tissue specificity:Expressed in several tissues. Highest expression in lung, liver, skeletal muscle, kidney, pancreas, spleen and placenta.,		

Validation Data



Western blot analysis of lysates from 293T cells, primary antibody was diluted at 1:1000, 4° over night



Immunohistochemical analysis of paraffin-embedded human tonsil. 1, Antibody was diluted at 1:200(4° overnight). 2, Tris-EDTA,pH9.0 was used for antigen retrieval. 3,Secondary antibody was diluted at 1:200(room temperature, 45min).

## | Contact information

Orders: order@immunoway.com  
Support: tech@immunoway.com  
Telephone: 877-594-3616 (Toll Free), 408-747-0185  
Website: <http://www.immunoway.com>  
Address: 2200 Ringwood Ave San Jose, CA 95131 USA



Please scan the QR code  
to access additional  
product information:  
**SIA4A Rabbit pAb**

---

For Research Use Only. Not for Use in Diagnostic Procedures.

[Antibody](#) | [ELISA Kits](#) | [Protein](#) | [Reagents](#)