

PTCD3 Rabbit pAb

CatalogNo: YT7215

Key Features

Host Species

- Rabbit

Reactivity

- Human, Mouse

Applications

- WB, IHC

MW

- 76kD (Calculated)

Isotype

- IgG

Recommended Dilution Ratios

WB 1:500-2000

IHC 1:50-300

Storage

Storage* -15°C to -25°C/1 year (Do not lower than -25°C)

Formulation Liquid in PBS containing 50% glycerol, 0.5% BSA and 0.02% sodium azide.

Basic Information

Clonality Polyclonal

Immunogen Information

Immunogen Synthesized peptide derived from human PTCD3 AA range: 624-674

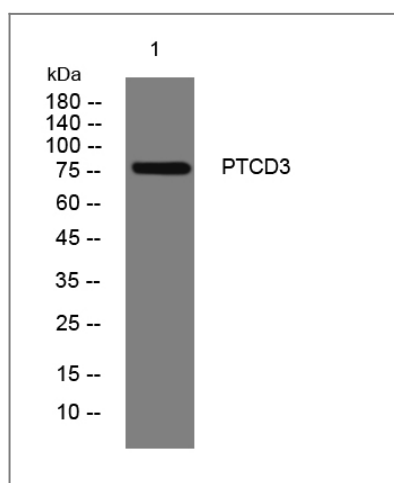
Specificity This antibody detects endogenous levels of PTCD3 at Human/Mouse

Target Information

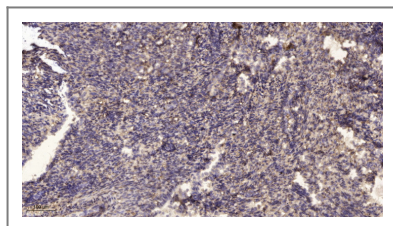
Gene name PTCD3 TRG15

Protein Name	PTCD3		
	Organism	Gene ID	UniProt ID
	Human	55037 ;	Q96EY7 ;
	Mouse	69956 ;	Q14C51 ;
Cellular Localization	Mitochondrion .		
Tissue specificity	Abundant in testes, skeletal muscle and heart tissue.		
Function	similarity:Belongs to the PTCD3 family.,similarity:Contains 10 PPR (pentatricopeptide) repeats.,		

Validation Data



Western blot analysis of lysates from HpeG2 cells, primary antibody was diluted at 1:1000, 4° over night



Immunohistochemical analysis of paraffin-embedded human uterus. 1, Antibody was diluted at 1:200(4° overnight). 2, Tris-EDTA,pH9.0 was used for antigen retrieval. 3,Secondary antibody was diluted at 1:200(room temperature, 45min).

Contact information

Orders: order@immunoway.com
 Support: tech@immunoway.com
 Telephone: 877-594-3616 (Toll Free), 408-747-0185
 Website: <http://www.immunoway.com>
 Address: 2200 Ringwood Ave San Jose, CA 95131 USA



Please scan the QR code to access additional product information:
PTCD3 Rabbit pAb

