

TR112 Rabbit pAb

CatalogNo: YT7205

| Key Features

Host Species

- Rabbit

Reactivity

- Human, Mouse

Applications

- WB

MW

- 14kD (Calculated)

Isotype

- IgG

| Recommended Dilution Ratios

WB 1:500-2000

| Storage

Storage*

-15°C to -25°C/1 year (Do not lower than -25°C)

Formulation

Liquid in PBS containing 50% glycerol, 0.5% BSA and 0.02% sodium azide.

| Basic Information

Clonality

Polyclonal

| Immunogen Information

Immunogen

Synthesized peptide derived from human TR112 AA range: 65-115

Specificity

This antibody detects endogenous levels of TR112 at Human/Mouse

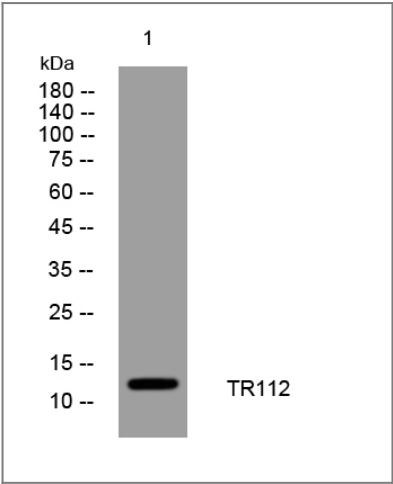
| Target Information

Gene name

TRMT112 AD-001 HSPC152 HSPC170

Protein Name	TR112		
	Organism	Gene ID	UniProt ID
	Human	51504;	Q9UI30;
	Mouse	67674;	Q9DCG9;
Cellular Localization	Nucleus, nucleoplasm . Cytoplasm, perinuclear region . Localizes to a polarized perinuclear structure, overlapping partially with the Golgi and lysosomes (PubMed:25851604). .		
Function	similarity:Belongs to the TRM112 family.,similarity:Contains 1 TRM112 domain.,		

Validation Data



Western blot analysis of lysates from SW480 cells, primary antibody was diluted at 1:1000, 4°over night

Contact information

Orders: order@immunoway.com
 Support: tech@immunoway.com
 Telephone: 877-594-3616 (Toll Free), 408-747-0185
 Website: <http://www.immunoway.com>
 Address: 2200 Ringwood Ave San Jose, CA 95131 USA



Please scan the QR code
 to access additional
 product information:
TR112 Rabbit pAb