

SRS12 Rabbit pAb

CatalogNo: YT7192

Key Features

Host Species

- Rabbit

Reactivity

- Human, Mouse

Applications

- WB

MW

- 29kD (Calculated)

Isotype

- IgG

Recommended Dilution Ratios

WB 1:500-2000

Storage

Storage*

-15°C to -25°C/1 year (Do not lower than -25°C)

Formulation

Liquid in PBS containing 50% glycerol, 0.5% BSA and 0.02% sodium azide.

Basic Information

Clonality

Polyclonal

Immunogen Information

Immunogen

Synthesized peptide derived from human SRS12 AA range: 105-155

Specificity

This antibody detects endogenous levels of SRS12 at Human/Mouse

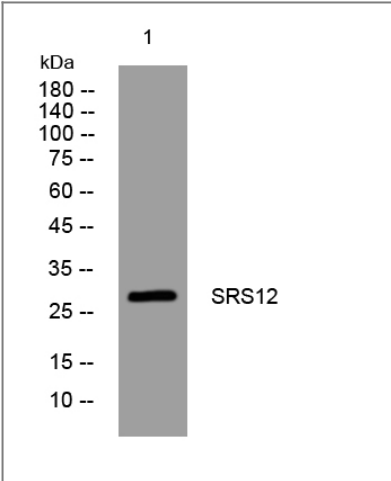
Target Information

Gene name

SRSF12 SFRS13B SFRS19 SRRP35

Protein Name	SRS12		
	Organism	Gene ID	UniProt ID
	Human	135295;	Q8WXF0;
	Mouse	272009;	Q8C8K3;
Cellular Localization	Nucleus .		
Tissue specificity	Expressed in testis.		
Function	Function:Splicing factor that seems to antagonize SR proteins in pre-mRNA splicing regulation.,similarity:Belongs to the splicing factor SR family.,similarity:Contains 1 RRM (RNA recognition motif) domain.,tissue specificity:Expressed in testis.,		

| Validation Data



Western blot analysis of lysates from A431 cells, primary antibody was diluted at 1:1000, 4°over night

| Contact information

Orders: order@immunoway.com
Support: tech@immunoway.com
Telephone: 877-594-3616 (Toll Free), 408-747-0185
Website: http://www.immunoway.com
Address: 2200 Ringwood Ave San Jose, CA 95131 USA



Please scan the QR code to access additional product information:
SRS12 Rabbit pAb