

NEO1 Rabbit pAb

CatalogNo: YT7169

Key Features

Host Species

- Rabbit

Reactivity

- Human, Mouse, Rat

Applications

- WB

MW

- 161kD (Calculated)

Isotype

- IgG

Recommended Dilution Ratios

WB 1:500-2000

Storage

Storage* -15°C to -25°C/1 year (Do not lower than -25°C)

Formulation Liquid in PBS containing 50% glycerol, 0.5% BSA and 0.02% sodium azide.

Basic Information

Clonality Polyclonal

Immunogen Information

Immunogen Synthesized peptide derived from human NEO1 AA range: 82-132

Specificity This antibody detects endogenous levels of NEO1 at Human/Mouse/Rat

Target Information

Gene name NEO1 IGDCC2 NGN

Protein Name NEO1

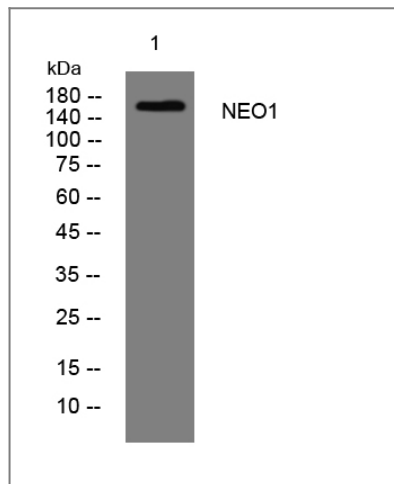
Organism	Gene ID	UniProt ID
Human	4756;	Q92859;
Mouse		P97798;
Rat		P97603;

Cellular Localization Cell membrane; Single-pass type I membrane protein.

Tissue specificity Widely expressed and also in cancer cell lines.

Function Alternative products:Additional isoforms seem to exist,Function:May be involved as a regulatory protein in the transition of undifferentiated proliferating cells to their differentiated state. May also function as a cell adhesion molecule in a broad spectrum of embryonic and adult tissues.,similarity:Belongs to the immunoglobulin superfamily. DCC family.,similarity:Contains 4 Ig-like C2-type (immunoglobulin-like) domains.,similarity:Contains 6 fibronectin type-III domains.,tissue specificity:Widely expressed and also in cancer cell lines.,

Validation Data



Western blot analysis of lysates from HpeG2 cells, primary antibody was diluted at 1:1000, 4° over night

Contact information

Orders: order@immunoway.com
Support: tech@immunoway.com
Telephone: 877-594-3616 (Toll Free), 408-747-0185
Website: <http://www.immunoway.com>
Address: 2200 Ringwood Ave San Jose, CA 95131 USA



Please scan the QR code to access additional product information:
NEO1 Rabbit pAb

