

## P33MX Rabbit pAb

CatalogNo: YT7126

### | Key Features

#### Host Species

- Rabbit

#### Reactivity

- Human, Mouse, Rat

#### Applications

- WB

#### MW

- 34kD (Calculated)

#### Isotype

- IgG

### | Recommended Dilution Ratios

WB 1:500-2000

### | Storage

#### Storage\*

-15°C to -25°C/1 year (Do not lower than -25°C)

#### Formulation

Liquid in PBS containing 50% glycerol, 0.5% BSA and 0.02% sodium azide.

### | Basic Information

#### Clonality

Polyclonal

### | Immunogen Information

#### Immunogen

Synthesized peptide derived from human P33MX AA range: 186-236

#### Specificity

This antibody detects endogenous levels of P33MX at Human/Mouse/Rat

### | Target Information

#### Gene name

KIAA1191 P33MONOX

**Protein Name** P33MX

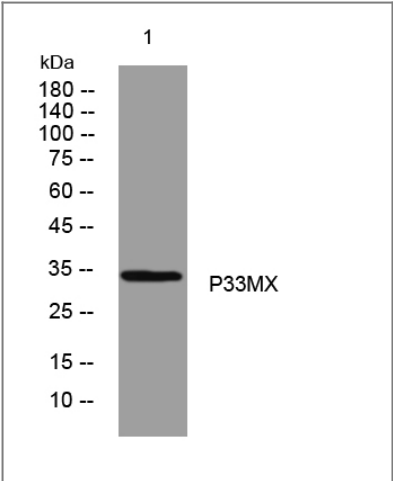
Organism	Gene ID	UniProt ID
Human	<a href="#">57179;</a>	<a href="#">Q96A73;</a>
Mouse	<a href="#">97820;</a>	<a href="#">Q9DBN4;</a>
Rat	<a href="#">306766;</a>	<a href="#">Q5U2R6;</a>

**Cellular Localization** Cytoplasm .

**Tissue specificity** Down-regulated in the occipital lobe of an early stage Alzheimer disease patients.

**Function** similarity:Belongs to the UPF0498 family.,

Validation Data



Western blot analysis of lysates from SH-SY5Y cells, primary antibody was diluted at 1:1000, 4°over night

Contact information

Orders: order@immunoway.com  
Support: tech@immunoway.com  
Telephone: 877-594-3616 (Toll Free), 408-747-0185  
Website: http://www.immunoway.com  
Address: 2200 Ringwood Ave San Jose, CA 95131 USA



Please scan the QR code to access additional product information:  
**P33MX Rabbit pAb**