

LACB2 Rabbit pAb

CatalogNo: YT7115

Key Features

Host Species

- Rabbit

Reactivity

- Human, Mouse, Rat

Applications

- WB, ELISA, IHC

MW

- 32kD (Calculated)

Isotype

- IgG

Recommended Dilution Ratios

WB 1:500-2000

IHC 1:50-300

ELISA 1:2000-20000

Storage

Storage*

-15°C to -25°C/1 year (Do not lower than -25°C)

Formulation

Liquid in PBS containing 50% glycerol, 0.5% BSA and 0.02% sodium azide.

Basic Information

Clonality

Polyclonal

Immunogen Information

Immunogen

Synthesized peptide derived from human LACB2 AA range: 19-69

Specificity

This antibody detects endogenous levels of LACB2 at Human/Mouse/Rat

Target Information

Gene name

LACTB2 CGI-83

Protein Name

LACB2

Organism**Gene ID****UniProt ID**

Human

[51110;](#)[Q53H82;](#)

Mouse

[212442;](#)[Q99KR3;](#)

Rat

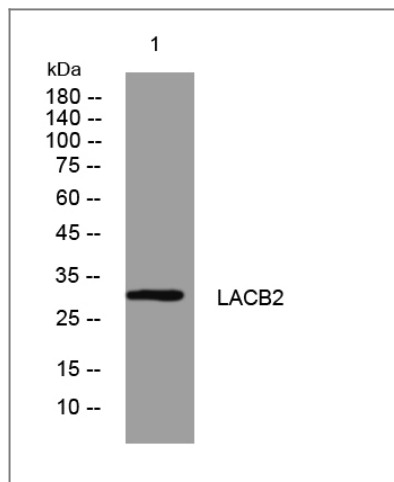
[297768;](#)[Q561R9;](#)**Cellular Localization**

Mitochondrion matrix .

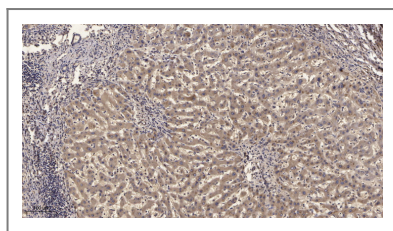
Function

similarity:Belongs to the metallo-beta-lactamase superfamily. Glyoxalase II family.,

Validation Data



Western blot analysis of lysates from 293T cells, primary antibody was diluted at 1:1000, 4° over night



Immunohistochemical analysis of paraffin-embedded human liver cancer. 1, Antibody was diluted at 1:200(4° overnight). 2, Tris-EDTA, pH9.0 was used for antigen retrieval. 3, Secondary antibody was diluted at 1:200(room temperature, 45min).

Contact information

Orders: order@immunoway.com
Support: tech@immunoway.com
Telephone: 877-594-3616 (Toll Free), 408-747-0185
Website: <http://www.immunoway.com>
Address: 2200 Ringwood Ave San Jose, CA 95131 USA



Please scan the QR code to access additional product information:
LACB2 Rabbit pAb

