

ZSC18 Rabbit pAb

CatalogNo: YT7105

Key Features

Host Species

- Rabbit

Reactivity

- Human

Applications

- WB

MW

- 56kD (Calculated)

Isotype

- IgG

Storage

Storage* -15°C to -25°C/1 year (Do not lower than -25°C)

Formulation Liquid in PBS containing 50% glycerol, 0.5% BSA and 0.02% sodium azide.

Recommended Dilution Ratios

WB 1:500-2000

Basic Information

Clonality Polyclonal

Immunogen Information

Immunogen Synthesized peptide derived from human ZSC18 AA range: 207-257

Specificity This antibody detects endogenous levels of ZSC18 at Human

Target Information

Gene name ZSCAN18 ZNF447

Protein Name ZSC18

Organism

Human

Gene ID

[65982](#);

UniProt ID

[Q8TBC5](#);

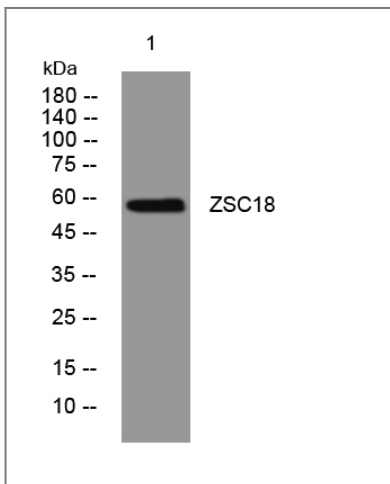
Cellular Localization

Nucleus .

Function

Function:May be involved in transcriptional regulation.,similarity:Belongs to the krueppel C2H2-type zinc-finger protein family.,similarity:Contains 1 SCAN box domain.,similarity:Contains 2 C2H2-type zinc fingers.,

Validation Data



Western blot analysis of lysates from SW480 cells, primary antibody was diluted at 1:1000, 4°over night

Contact information

Orders: order@immunoway.com
Support: tech@immunoway.com
Telephone: 877-594-3616 (Toll Free), 408-747-0185
Website: <http://www.immunoway.com>
Address: 2200 Ringwood Ave San Jose, CA 95131 USA



Please scan the QR code to access additional product information:
ZSC18 Rabbit pAb

For Research Use Only. Not for Use in Diagnostic Procedures.

[Antibody](#) | [ELISA Kits](#) | [Protein](#) | [Reagents](#)