

AT134 Rabbit pAb

CatalogNo: YT7061

| Key Features

Host Species

- Rabbit

Reactivity

- Human, Mouse

Applications

- WB

MW

- 132kD (Calculated)

Isotype

- IgG

| Recommended Dilution Ratios

WB 1:500-2000

| Storage

Storage*

-15°C to -25°C/1 year (Do not lower than -25°C)

Formulation

Liquid in PBS containing 50% glycerol, 0.5% BSA and 0.02% sodium azide.

| Basic Information

Clonality

Polyclonal

| Immunogen Information

Immunogen

Synthesized peptide derived from human AT134 AA range: 719-769

Specificity

This antibody detects endogenous levels of AT134 at Human/Mouse

| Target Information

Gene name

ATP13A4 UNQ3052/PRO9871

Protein Name AT134

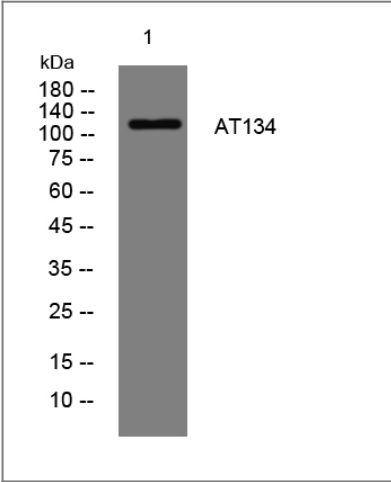
Organism	Gene ID	UniProt ID
Human	84239;	Q4VNC1;
Mouse	224079;	Q5XF90;

Cellular Localization Early endosome membrane ; Multi-pass membrane protein . Late endosome membrane ; Multi-pass membrane protein . Recycling endosome membrane ; Multi-pass membrane protein .

Tissue specificity Expressed in heart, placenta, liver, skeletal muscles, and pancreas. Lower levels of expression are also detected in brain, lung and kidney. Weakly expressed in the adult brain. Expression in fetal brain is higher than in adult brain, with levels similar to several other fetal tissues including spleen and skeletal muscle. In adult brain expressed at low levels in all tissues examined, including the temporal lobe and putamen (PubMed:15925480). Highly expressed in the respiratory and integumentary systems (PubMed:29505581).

Function Catalytic activity:ATP + H(2)O = ADP + phosphate.,Disease:A chromosomal aberration involving ATP13A4 is found in 2 patients with specific language impairment (SLI) disorders. Paracentric inversion inv(3)(q25;q29). The inversion produces a disruption of the protein.,induction:Decreased by half in the SLI patient lymphoblasts.,sequence Caution:Wrong choice of CDS.,similarity:Belongs to the cation transport ATPase (P-type) family.,similarity:Belongs to the cation transport ATPase (P-type) family. Type V subfamily.,tissue specificity:Expressed in heart, placenta, liver, skeletal muscles, and pancreas. Lower levels of expression are also detected in brain, lung and kidney. Weakly expressed in the adult brain. Expression in fetal brain is higher than in adult brain, with levels similar to several other fetal tissues including spleen and skeletal muscle. In adult brain expressed at low levels in all tissues examined, including the temporal lobe and putamen.,

Validation Data



Western blot analysis of lysates from THP-1 cells, primary antibody was diluted at 1:1000, 4°over night

Contact information

Orders: order@immunoway.com
Support: tech@immunoway.com
Telephone: 877-594-3616 (Toll Free), 408-747-0185
Website: http://www.immunoway.com
Address: 2200 Ringwood Ave San Jose, CA 95131 USA



Please scan the QR code
to access additional
product information:
AT134 Rabbit pAb

For Research Use Only. Not for Use in Diagnostic Procedures.

[Antibody](#) | [ELISA Kits](#) | [Protein](#) | [Reagents](#)