

## LMA2L Rabbit pAb

CatalogNo: YT7060

### Key Features

#### Host Species

- Rabbit

#### Reactivity

- Human, Mouse

#### Applications

- WB, ELISA, IHC

#### MW

- 38kD (Calculated)

#### Isotype

- IgG

### Recommended Dilution Ratios

WB 1:500-2000

IHC 1:50-300

ELISA 1:2000-20000

### Storage

**Storage\*** -15°C to -25°C/1 year (Do not lower than -25°C)

**Formulation** Liquid in PBS containing 50% glycerol, 0.5% BSA and 0.02% sodium azide.

### Basic Information

**Clonality** Polyclonal

### Immunogen Information

**Immunogen** Synthesized peptide derived from human LMA2L AA range: 56-106

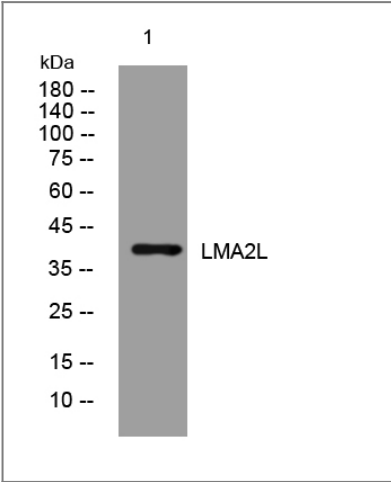
**Specificity** This antibody detects endogenous levels of LMA2L at Human/Mouse

### Target Information

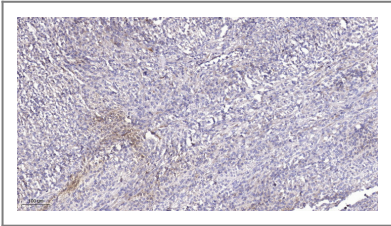
**Gene name** LMAN2L VIPL PSEC0028 UNQ368/PRO704

Protein Name	LMA2L		
	Organism	Gene ID	UniProt ID
	Human	<a href="#">81562</a> ;	<a href="#">Q9H0V9</a> ;
	Mouse	<a href="#">214895</a> ;	<a href="#">P59481</a> ;
Cellular Localization	Endoplasmic reticulum membrane; Single-pass type I membrane protein. Golgi apparatus membrane; Single-pass type I membrane protein. Predominantly found in the endoplasmic reticulum. Partly found in the Golgi.		
Tissue specificity	Expressed in numerous tissues. Highest expression in skeletal muscle and kidney, intermediate levels in heart, liver and placenta, low levels in brain, thymus, spleen, small intestine and lung.		
Function	Function:May be involved in the regulation of export from the endoplasmic reticulum of a subset of glycoproteins. May function as a regulator of ERGIC-53.,similarity:Contains 1 L-type lectin-like domain.,subcellular location:Predominantly found in the endoplasmic reticulum. Partly found in the Golgi.,tissue specificity:Expressed in numerous tissues. Highest expression in skeletal muscle and kidney, intermediate levels in heart, liver and placenta, low levels in brain, thymus, spleen, small intestine and lung.,		

Validation Data



Western blot analysis of lysates from THP-1 cells, primary antibody was diluted at 1:1000, 4° over night



Immunohistochemical analysis of paraffin-embedded human Colon cancer. 1, Antibody was diluted at 1:200(4° overnight). 2, Tris-EDTA,pH9.0 was used for antigen retrieval. 3,Secondary antibody was diluted at 1:200(room temperature, 45min).

Contact information

Orders: order@immunoway.com  
Support: tech@immunoway.com  
Telephone: 877-594-3616 (Toll Free), 408-747-0185  
Website: http://www.immunoway.com  
Address: 2200 Ringwood Ave San Jose, CA 95131 USA



Please scan the QR code  
to access additional  
product information:  
**LMA2L Rabbit pAb**

---

For Research Use Only. Not for Use in Diagnostic Procedures.

[Antibody](#) | [ELISA Kits](#) | [Protein](#) | [Reagents](#)