

DLGP2 Rabbit pAb

CatalogNo: YT7053

| Key Features

Host Species

- Rabbit

Reactivity

- Human, Mouse, Rat

Applications

- WB

MW

- 116kD (Calculated)

Isotype

- IgG

| Recommended Dilution Ratios

WB 1:500-2000

| Storage

Storage* -15°C to -25°C/1 year (Do not lower than -25°C)

Formulation Liquid in PBS containing 50% glycerol, 0.5% BSA and 0.02% sodium azide.

| Basic Information

Clonality Polyclonal

| Immunogen Information

Immunogen Synthesized peptide derived from human DLGP2 AA range: 727-777

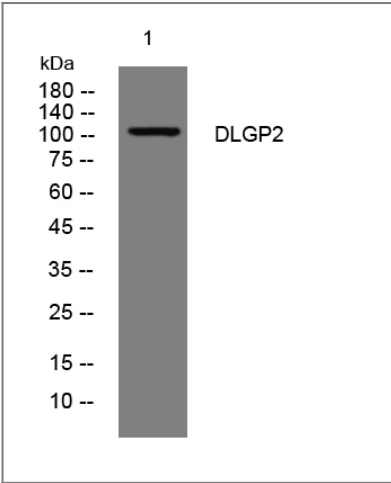
Specificity This antibody detects endogenous levels of DLGP2 at Human/Mouse/Rat

| Target Information

Gene name DLGAP2 DAP2

Protein Name	DLGP2		
	Organism	Gene ID	UniProt ID
	Human	9228;	Q9P1A6;
	Mouse	244310;	Q8BJ42;
	Rat	116681;	P97837;
Cellular Localization	Cell membrane ; Peripheral membrane protein . Cell junction, synapse, postsynaptic density . Cell junction, synapse . Postsynaptic density of neuronal cells. .		
Tissue specificity	Expressed in brain and kidney.		
Function	Function:May play a role in the molecular organization of synapses and neuronal cell signaling. Could be an adapter protein linking ion channel to the subsynaptic cytoskeleton. May induce enrichment of PSD-95/SAP90 at the plasma membrane.,similarity:Belongs to the SAPAP family.,subcellular location:Postsynaptic density of neuronal cells.,subunit:Interacts with DLG1 and DLG4/PSD-95.,tissue specificity:Expressed in brain and kidney.,		

| Validation Data



Western blot analysis of lysates from PC-12 cells, primary antibody was diluted at 1:1000, 4°over night

| Contact information

Orders:
Support:
Telephone:
Website:
Address:

order@immunoway.com
tech@immunoway.com
877-594-3616 (Toll Free), 408-747-0185
http://www.immunoway.com
2200 Ringwood Ave San Jose, CA 95131 USA



Please scan the QR code to access additional product information:
DLGP2 Rabbit pAb

