

TDH Rabbit pAb

CatalogNo: YT7048

Key Features

Host Species

- Rabbit

Reactivity

- Human, Mouse

Applications

- WB

MW

- 25kD (Calculated)

Isotype

- IgG

Recommended Dilution Ratios

WB 1:500-2000

Storage

Storage*

-15°C to -25°C/1 year (Do not lower than -25°C)

Formulation

Liquid in PBS containing 50% glycerol, 0.5% BSA and 0.02% sodium azide.

Basic Information

Clonality

Polyclonal

Immunogen Information

Immunogen

Synthesized peptide derived from human TDH AA range: 169-219

Specificity

This antibody detects endogenous levels of TDH at Human/Mouse

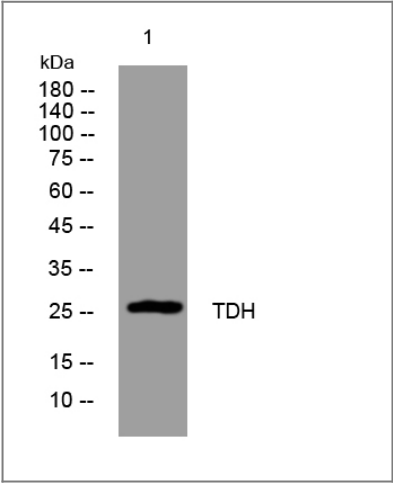
Target Information

Gene name

TDH

Protein Name	TDH		
	Organism	Gene ID	UniProt ID
	Human		Q8IZJ6 ;
	Mouse	58865 ;	Q8K3F7 ;
Cellular Localization	Mitochondrion .		
Tissue specificity	Expressed in all tissues examined. Detected in most cell types examined, but not observed in endothelial cells, glioma cell lines and some leukemia cell lines.		
Function	Caution:According to PubMed:12361482, the human TDH gene is an expressed pseudogene encoding non-functional truncated proteins that are unable to make appropriate contacts with the substrates, L-threonine and NAD(+). Although all exons expected to encode a functional L-threonine 3-dehydrogenase of 369 residues are present in the human genome, all transcripts described encode truncated proteins that result from mutations within the gene causing the loss of acceptor splice site preceding exon 4 and exon 6.,similarity:Belongs to the sugar epimerase family.,tissue specificity:Expressed in all tissues examined. Detected in most cell types examined, but not observed in endothelial cells, glioma cell lines and some leukemia cell lines.,		

Validation Data



Western blot analysis of lysates from MDA-MB cells, primary antibody was diluted at 1:1000, 4°over night

Contact information

Orders: order@immunoway.com
Support: tech@immunoway.com
Telephone: 877-594-3616 (Toll Free), 408-747-0185
Website: http://www.immunoway.com
Address: 2200 Ringwood Ave San Jose, CA 95131 USA



Please scan the QR code to access additional product information:
TDH Rabbit pAb

