

CP089 Rabbit pAb

CatalogNo: YT7047

| Key Features

Host Species

- Rabbit

Reactivity

- Human, Mouse

Applications

- WB

MW

- 44kD (Calculated)

Isotype

- IgG

| Recommended Dilution Ratios

WB 1:500-2000

| Storage

Storage*

-15°C to -25°C/1 year (Do not lower than -25°C)

Formulation

Liquid in PBS containing 50% glycerol, 0.5% BSA and 0.02% sodium azide.

| Basic Information

Clonality

Polyclonal

| Immunogen Information

Immunogen

Synthesized peptide derived from human CP089 AA range: 226-276

Specificity

This antibody detects endogenous levels of CP089 at Human/Mouse

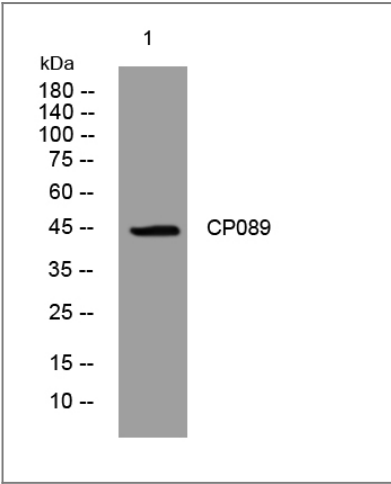
| Target Information

Gene name

C16orf89 UNQ904/PRO1925

Protein Name	CP089		
	Organism	Gene ID	UniProt ID
	Human	146556 ;	Q6UX73 ;
	Mouse	239691 ;	Q3UST5 ;
Cellular Localization	Secreted .		
Tissue specificity	Predominantly expressed in thyroid tissue.		

| Validation Data



Western blot analysis of lysates from HpeG2 cells, primary antibody was diluted at 1:1000, 4°over night

| Contact information

Orders: order@immunoway.com
Support: tech@immunoway.com
Telephone: 877-594-3616 (Toll Free), 408-747-0185
Website: http://www.immunoway.com
Address: 2200 Ringwood Ave San Jose, CA 95131 USA



Please scan the QR code to access additional product information:
CP089 Rabbit pAb