

## SDHL Rabbit pAb

CatalogNo: YT7040

### Key Features

**Host Species**

- Rabbit

**Reactivity**

- Human, Mouse, Rat

**Applications**

- WB, ELISA, IHC

**MW**

- 36kD (Calculated)

**Isotype**

- IgG

### Storage

**Storage\*** -15°C to -25°C/1 year (Do not lower than -25°C)**Formulation** Liquid in PBS containing 50% glycerol, 0.5% BSA and 0.02% sodium azide.

### Recommended Dilution Ratios

**WB 1:500-2000****IHC 1:50-300****ELISA 1:2000-20000**

### Basic Information

**Clonality** Polyclonal

### Immunogen Information

**Immunogen** Synthesized peptide derived from human SDHL AA range: 207-257**Specificity** This antibody detects endogenous levels of SDHL at Human/Mouse/Rat

### Target Information

**Gene name** SDS SDH

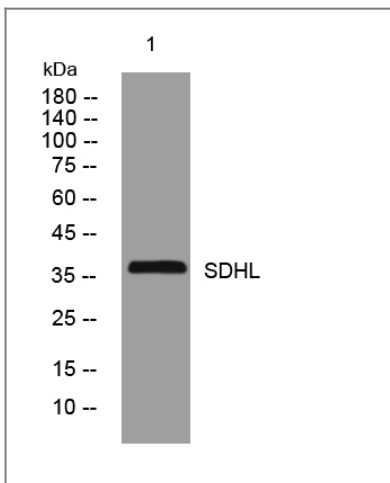
**Protein Name** SDHL

Organism	Gene ID	UniProt ID
Human	<a href="#">10993</a> ;	<a href="#">P20132</a> ;
Mouse	<a href="#">231691</a> ;	<a href="#">Q8VBT2</a> ;
Rat	<a href="#">25044</a> ;	<a href="#">P09367</a> ;

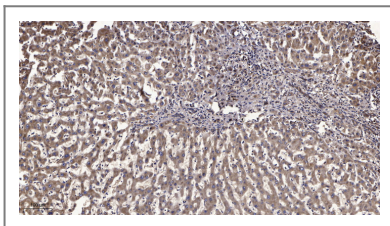
**Cellular Localization** Cytoplasm.

**Function** Catalytic activity:L-serine = pyruvate + NH(3).,cofactor:Pyridoxal phosphate.,pathway:Carbohydrate biosynthesis; gluconeogenesis.,similarity:Belongs to the serine/threonine dehydratase family.,subunit:Homodimer.,

## Validation Data



Western blot analysis of lysates from HpeG2 cells, primary antibody was diluted at 1:1000, 4° overnight



Immunohistochemical analysis of paraffin-embedded human liver cancer. 1, Antibody was diluted at 1:200(4° overnight). 2, Tris-EDTA,pH9.0 was used for antigen retrieval. 3,Secondary antibody was diluted at 1:200(room temperature, 45min).

## Contact information

Orders: [order@immunoway.com](mailto:order@immunoway.com)  
Support: [tech@immunoway.com](mailto:tech@immunoway.com)  
Telephone: 877-594-3616 (Toll Free), 408-747-0185  
Website: <http://www.immunoway.com>  
Address: 2200 Ringwood Ave San Jose, CA 95131 USA



Please scan the QR code to access additional product information:  
**SDHL Rabbit pAb**

