

## RPIA Rabbit pAb

CatalogNo: YT6982

### | Key Features

#### Host Species

- Rabbit

#### Reactivity

- Human, Mouse

#### Applications

- WB

#### MW

- 34kD (Calculated)

#### Isotype

- IgG

### | Recommended Dilution Ratios

WB 1:500-2000

### | Storage

#### Storage\*

-15°C to -25°C/1 year (Do not lower than -25°C)

#### Formulation

Liquid in PBS containing 50% glycerol, 0.5% BSA and 0.02% sodium azide.

### | Basic Information

#### Clonality

Polyclonal

### | Immunogen Information

#### Immunogen

Synthesized peptide derived from human RPIA AA range: 256-306

#### Specificity

This antibody detects endogenous levels of RPIA at Human/Mouse

### | Target Information

#### Gene name

RPIA RPI

**Protein Name**

RPIA

**Organism****Gene ID****UniProt ID**

Human

[22934;](#)[P49247;](#)

Mouse

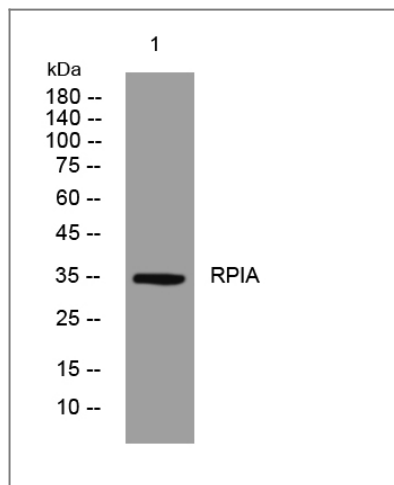
[19895;](#)[P47968;](#)**Cellular Localization**

cytosol,integral component of membrane,intracellular membrane-bounded organelle,

**Function**

Catalytic activity:D-ribose 5-phosphate = D-ribulose 5-phosphate.,Disease:Defects in RPIA are the cause of ribose 5-phosphate isomerase deficiency [MIM:608611]. A patient has been described with a deficiency of ribose 5-phosphate isomerase who presented with leukoencephalopathy and peripheral neuropathy. Proton magnetic resonance spectroscopy of the brain revealed a highly elevated level of the polyols ribitol and D-arabitol, which were subsequently also found in high concentrations in body fluids. Deficient activity of RPIA, one of the pentose phosphate pathway enzymes, has been demonstrated in fibroblasts.,pathway:Carbohydrate degradation; pentose phosphate pathway; D-ribose 5-phosphate from D-ribulose 5-phosphate (non-oxidative stage): step 1/1.,similarity:Belongs to the ribose 5-phosphate isomerase family.,

## Validation Data



Western blot analysis of lysates from HuvEc cells, primary antibody was diluted at 1:1000, 4° over night

## Contact information

Orders: [order@immunoway.com](mailto:order@immunoway.com)  
Support: [tech@immunoway.com](mailto:tech@immunoway.com)  
Telephone: 877-594-3616 (Toll Free), 408-747-0185  
Website: <http://www.immunoway.com>  
Address: 2200 Ringwood Ave San Jose, CA 95131 USA



Please scan the QR code to access additional product information:  
**RPIA Rabbit pAb**

