

CENPX Rabbit pAb

CatalogNo: YT6972

Key Features

Host Species

- Rabbit

Reactivity

- Human, Mouse

Applications

- IHC, IF

MW

- 9kD (Calculated)

Isotype

- IgG

Recommended Dilution Ratios

IHC 1:50-200

IF 1:50-200

Storage

Storage* -15°C to -25°C/1 year (Do not lower than -25°C)

Formulation Liquid in PBS containing 50% glycerol, 0.5% BSA and 0.02% sodium azide.

Basic Information

Clonality Polyclonal

Immunogen Information

Immunogen Synthesized peptide derived from human CENPX AA range: 28-78

Specificity This antibody detects endogenous levels of CENPX at Human/Mouse

Target Information

Gene name STRA13 CENPX FAAP10 MHF2

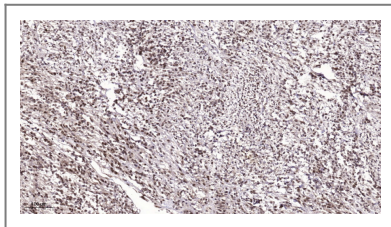
Protein Name CENPX

Organism	Gene ID	UniProt ID
Human	201254;	A8MT69;
Mouse	20892;	Q8C4X1;

**Cellular
Localization**

Nucleus . Chromosome, centromere . Chromosome, centromere, kinetochore . Assembly of CENPS and CENPX and its partner subunits CENPT and CENPW at centromeres occurs through a dynamic exchange mechanism. Although exchange is continuous in the cell cycle, de novo assembly starts principally during mid-late S phase and is complete by G2. CENPX being less stably bound at the kinetochore than CENPS. .

| Validation Data



Immunohistochemical analysis of paraffin-embedded human Colon cancer. 1, Antibody was diluted at 1:200(4° overnight). 2, Tris-EDTA,pH9.0 was used for antigen retrieval. 3,Secondary antibody was diluted at 1:200(room temperature, 45min).

| Contact information

Orders: order@immunoway.com
Support: tech@immunoway.com
Telephone: 877-594-3616 (Toll Free), 408-747-0185
Website: <http://www.immunoway.com>
Address: 2200 Ringwood Ave San Jose, CA 95131 USA



Please scan the QR code
to access additional
product information:
CENPX Rabbit pAb

For Research Use Only. Not for Use in Diagnostic Procedures.

[Antibody](#) | [ELISA Kits](#) | [Protein](#) | [Reagents](#)