

TFCP2 Rabbit pAb

CatalogNo: YT6953

| Key Features

Host Species

- Rabbit

Reactivity

- Human, Mouse

Applications

- WB

MW

- 55kD (Calculated)

Isotype

- IgG

| Recommended Dilution Ratios

WB 1:500-2000

| Storage

Storage* -15°C to -25°C/1 year (Do not lower than -25°C)

Formulation Liquid in PBS containing 50% glycerol, 0.5% BSA and 0.02% sodium azide.

| Basic Information

Clonality Polyclonal

| Immunogen Information

Immunogen Synthesized peptide derived from human TFCP2 AA range: 21-71

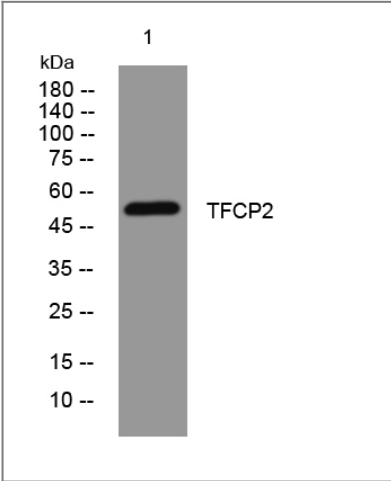
Specificity This antibody detects endogenous levels of TFCP2 at Human/Mouse

| Target Information

Gene name TFCP2 LSF SEF

Protein Name	TFCP2		
	Organism	Gene ID	UniProt ID
	Human	7024;	Q12800;
	Mouse	21422;	Q9ERA0;
Cellular Localization	Nucleus .		
Tissue specificity	Ubiquitous. Expressed in brain, ovary, kidney, thymus, spleen, liver, adrenal, heart and lung (at protein level).		
Function	<p>developmental stage:Expressed in fetal erythroid tissue.,Function:Binds a variety of cellular and viral promoters including fibrinogen, alpha-globin, SV40 and HIV-1 promoters. Activation of the alpha-globin promoter in erythroid cells is via synergistic interaction with UBP1 (By similarity). Functions as part of the SSP (stage selector protein) complex. Facilitates the interaction of the gamma-globin genes with enhancer elements contained in the locus control region in fetal erythroid cells. Interacts by binding to the stage selector element (SSE) in the proximal gamma-globin promoter.,miscellaneous:In PubMed:8114710 authors noted that a 10-fold molar excess of isoform 2 over isoform 1 inhibited DNA-binding.,similarity:Belongs to the grh/CP2 family. CP2 subfamily.,subunit:Binds to DNA as a dimer, isoform 2 does not bind to DNA or affect the binding of isoform 1 to DNA. Interacts with UBP1 and PIAS1, and is probably part of a complex containing TFCP2, UBP1 and PIAS1 (By similarity). Component of the SSP (stage selector protein) complex, which appears to be a heteromer of TFCP2 and 2 copies of NFE4.,tissue specificity:Ubiquitous. Expressed in brain, ovary, kidney, thymus, spleen, liver, adrenal, heart and lung (at protein level).</p>		

| Validation Data



Western blot analysis of lysates from HpeG2 cells, primary antibody was diluted at 1:1000, 4°over night

| Contact information

Orders: order@immunoway.com
Support: tech@immunoway.com
Telephone: 877-594-3616 (Toll Free), 408-747-0185
Website: <http://www.immunoway.com>
Address: 2200 Ringwood Ave San Jose, CA 95131 USA



Please scan the QR code
to access additional
product information:
TFCP2 Rabbit pAb

For Research Use Only. Not for Use in Diagnostic Procedures.

[Antibody](#) | [ELISA Kits](#) | [Protein](#) | [Reagents](#)