

## SC22C Rabbit pAb

CatalogNo: YT6946

### | Key Features

#### Host Species

- Rabbit

#### Reactivity

- Human, Mouse

#### Applications

- WB, IF, ELISA, IHC

#### MW

- 33kD (Calculated)

#### Isotype

- IgG

### | Recommended Dilution Ratios

**WB 1:500-2000**

**IF/ICC 1:50-200**

**ELISA 1:2000-20000**

**IHC 1:50-200**

### | Storage

#### Storage\*

-15°C to -25°C/1 year (Do not lower than -25°C)

#### Formulation

Liquid in PBS containing 50% glycerol, 0.5% BSA and 0.02% sodium azide.

### | Basic Information

#### Clonality

Polyclonal

### | Immunogen Information

#### Immunogen

Synthesized peptide derived from human SC22C AA range: 130-180

#### Specificity

This antibody detects endogenous levels of SC22C at Human/Mouse

### | Target Information

**Gene name** SEC22C SEC22L3 UNQ459/PRO784

**Protein Name** SC22C

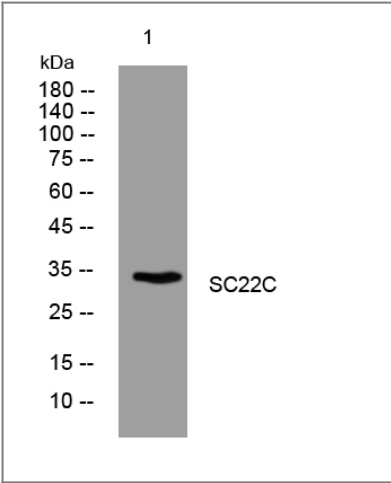
Organism	Gene ID	UniProt ID
Human	<a href="#">9117</a> ;	<a href="#">Q9BRL7</a> ;
Mouse	<a href="#">215474</a> ;	<a href="#">Q8BXT9</a> ;

**Cellular Localization** Endoplasmic reticulum membrane ; Multi-pass membrane protein .

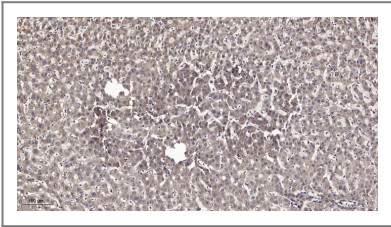
**Tissue specificity** Ubiquitously expressed.

**Function** Function:May be involved in vesicle transport between the ER and the Golgi complex.,similarity:Belongs to the synaptobrevin family.,similarity:Contains 1 longin domain.,tissue specificity:Ubiquitously expressed.,

## Validation Data



Western blot analysis of lysates from MDA-MB cells, primary antibody was diluted at 1:1000, 4°over night



Immunohistochemical analysis of paraffin-embedded human liver cancer. 1, Antibody was diluted at 1:200(4° overnight). 2, Tris-EDTA,pH9.0 was used for antigen retrieval. 3,Secondary antibody was diluted at 1:200(room temperature, 45min).

## Contact information

Orders: order@immunoway.com  
Support: tech@immunoway.com  
Telephone: 877-594-3616 (Toll Free), 408-747-0185  
Website: http://www.immunoway.com  
Address: 2200 Ringwood Ave San Jose, CA 95131 USA



Please scan the QR code  
to access additional  
product information:  
**SC22C Rabbit pAb**

---

For Research Use Only. Not for Use in Diagnostic Procedures.

[Antibody](#) | [ELISA Kits](#) | [Protein](#) | [Reagents](#)