

## TX264 Rabbit pAb

CatalogNo: YT6938

### | Key Features

#### Host Species

- Rabbit

#### Reactivity

- Human, Mouse

#### Applications

- WB

#### MW

- 34kD (Calculated)

#### Isotype

- IgG

### | Recommended Dilution Ratios

WB 1:500-2000

### | Storage

#### Storage\*

-15°C to -25°C/1 year (Do not lower than -25°C)

#### Formulation

Liquid in PBS containing 50% glycerol, 0.5% BSA and 0.02% sodium azide.

### | Basic Information

#### Clonality

Polyclonal

### | Immunogen Information

#### Immunogen

Synthesized peptide derived from human TX264 AA range: 112-162

#### Specificity

This antibody detects endogenous levels of TX264 at Human

### | Target Information

#### Gene name

TEX264 ZSIG11 UNQ337/PRO536

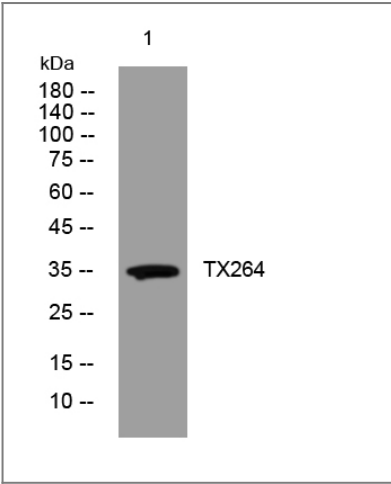
Protein Name TX264

Organism	Gene ID	UniProt ID
Human	<a href="#">51368</a> ;	<a href="#">Q9Y6I9</a> ;

Cellular Localization

Endoplasmic reticulum membrane ; Single-pass type III membrane protein . Cytoplasmic vesicle, autophagosome . Cytoplasm, cytosol . Nucleus . Chromosome . Is trafficked from tubular ER to growing autophagosomes via its cytosolic LIR motif (PubMed:31006537). Also found in the cytosol, nucleus and chromatin (PubMed:32152270). In response to formation of covalent DNA-protein cross-links (DPCs), localizes to the nuclear periphery, and associates with DNA replication forks (PubMed:32152270). .

Validation Data



Western blot analysis of lysates from VEC cells, primary antibody was diluted at 1:1000, 4°over night

Contact information

Orders: order@immunoway.com  
Support: tech@immunoway.com  
Telephone: 877-594-3616 (Toll Free), 408-747-0185  
Website: http://www.immunoway.com  
Address: 2200 Ringwood Ave San Jose, CA 95131 USA



Please scan the QR code to access additional product information:  
**TX264 Rabbit pAb**

For Research Use Only. Not for Use in Diagnostic Procedures.

[Antibody](#) | [ELISA Kits](#) | [Protein](#) | [Reagents](#)