

## RU2A Rabbit pAb

CatalogNo: YT6937

### | Key Features

#### Host Species

- Rabbit

#### Reactivity

- Human, Mouse

#### Applications

- WB

#### MW

- 28kD (Calculated)

#### Isotype

- IgG

### | Recommended Dilution Ratios

WB 1:500-2000

### | Storage

#### Storage\*

-15°C to -25°C/1 year (Do not lower than -25°C)

#### Formulation

Liquid in PBS containing 50% glycerol, 0.5% BSA and 0.02% sodium azide.

### | Basic Information

#### Clonality

Polyclonal

### | Immunogen Information

#### Immunogen

Synthesized peptide derived from human RU2A AA range: 47-97

#### Specificity

This antibody detects endogenous levels of RU2A at Human/Mouse

### | Target Information

#### Gene name

SNRPA1

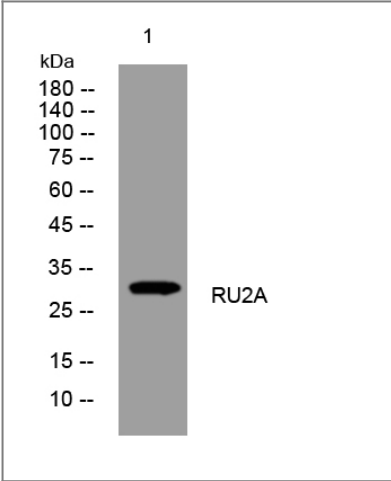
Protein Name RU2A

| Organism | Gene ID                 | UniProt ID               |
|----------|-------------------------|--------------------------|
| Human    | <a href="#">6627</a> ;  | <a href="#">P09661</a> ; |
| Mouse    | <a href="#">68981</a> ; | <a href="#">P57784</a> ; |

Cellular Localization Nucleus .

**Function** Function:This protein is associated with sn-RNP U2. It helps the A' protein to bind stem loop IV of U2 snRNA.,similarity:Belongs to the U2 small nuclear ribonucleoprotein A family.,similarity:Contains 3 LRR (leucine-rich) repeats.,subunit:Identified in the spliceosome C complex, at least composed of AQR, ASCC3L1, C19orf29, CDC40, CDC5L, CRNKL1, DDX23, DDX41, DDX48, DDX5, DGCR14, DHX35, DHX38, DHX8, EFTUD2, FRG1, GPATC1, HNRPA1, HNRPA2B1, HNRPA3, HNRPC, HNRPF, HNRPH1, HNRPK, HNRPM, HNRPR, HNRPU, KIAA1160, KIAA1604, LSM2, LSM3, MAGOH, MORG1, PABPC1, PLRG1, PNN, PPIE, PPIL1, PPIL3, PPWD1, PRPF19, PRPF4B, PRPF6, PRPF8, RALY, RBM22, RBM8A, RBMX, SART1, SF3A1, SF3A2, SF3A3, SF3B1, SF3B2, SF3B3, SFRS1, SKIV2L2, SNRPA1, SNRPB, SNRPB2, SNRPD1, SNRPD2, SNRPD3, SNRPE, SNRPF, SNRPG, SNW1, SRRM1, SRRM2, SYF2, SYNCRIP, TFIP11, THOC4, U2AF1, WDR57, XAB2 and ZCCHC8. Found in a pre-mRNA splicing complex with SFRS4, SFRS5, SNRNP70, SNRPA1, SRRM1 and SRRM2. Found in a pre-mRNA exonic splicing enhancer (ESE) complex with SNRNP70, SNRPA1, SRRM1 and TRA2B.,

Validation Data



Western blot analysis of lysates from CACO2 cells, primary antibody was diluted at 1:1000, 4°over night

Contact information

Orders: order@immunoway.com  
Support: tech@immunoway.com  
Telephone: 877-594-3616 (Toll Free), 408-747-0185  
Website: http://www.immunoway.com  
Address: 2200 Ringwood Ave San Jose, CA 95131 USA



Please scan the QR code to access additional product information:  
**RU2A Rabbit pAb**

