

F150B Rabbit pAb

CatalogNo: YT6925

| Key Features

Host Species

- Rabbit

Reactivity

- Human, Mouse, Rat

Applications

- WB

MW

- 17kD (Calculated)

Isotype

- IgG

| Recommended Dilution Ratios

WB 1:500-2000

| Storage

Storage*

-15°C to -25°C/1 year (Do not lower than -25°C)

Formulation

Liquid in PBS containing 50% glycerol, 0.5% BSA and 0.02% sodium azide.

| Basic Information

Clonality

Polyclonal

| Immunogen Information

Immunogen

Synthesized peptide derived from human F150B AA range: 64-114

Specificity

This antibody detects endogenous levels of F150B at Human/Mouse/Rat

| Target Information

Gene name

FAM150B UNQ542/PRO1097

Protein Name F150B

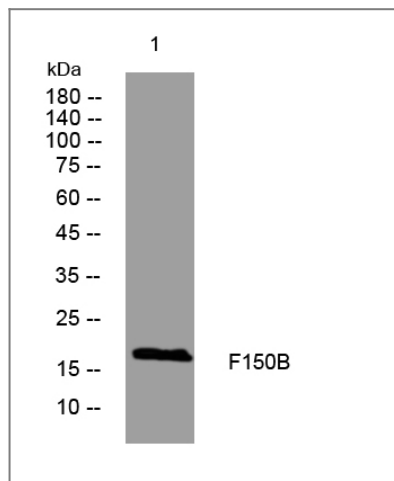
Organism	Gene ID	UniProt ID
Human	285016 ;	Q6UX46 ;
Mouse	100294583 ;	Q80UG6 ;
Rat	679566 ;	B2RZ42 ;

Cellular Localization Secreted . Cell membrane . Following interaction with receptor tyrosine kinase ALK, associates with the cell membrane, membrane-binding is required to activate ALK. .

Tissue specificity Widely expressed with highest levels in adrenal gland and modest levels in pancreas, testis and uterus.

Function similarity:Belongs to the FAM150 family.,

Validation Data



Western blot analysis of lysates from HEK293 cells, primary antibody was diluted at 1:1000, 4°over night

Contact information

Orders: order@immunoway.com
Support: tech@immunoway.com
Telephone: 877-594-3616 (Toll Free), 408-747-0185
Website: <http://www.immunoway.com>
Address: 2200 Ringwood Ave San Jose, CA 95131 USA



Please scan the QR code to access additional product information:
F150B Rabbit pAb