

## ZN140 Rabbit pAb

CatalogNo: YT6916

### | Key Features

#### Host Species

- Rabbit

#### Reactivity

- Human

#### Applications

- WB

#### MW

- 50kD (Calculated)

#### Isotype

- IgG

### | Recommended Dilution Ratios

WB 1:500-2000

### | Storage

**Storage\*** -15°C to -25°C/1 year(Do not lower than -25°C)

**Formulation** Liquid in PBS containing 50% glycerol, 0.5% BSA and 0.02% sodium azide.

### | Basic Information

**Clonality** Polyclonal

### | Immunogen Information

**Immunogen** Synthesized peptide derived from human ZN140 AA range: 222-272

**Specificity** This antibody detects endogenous levels of ZN140 at Human

### | Target Information

**Gene name** ZNF140

**Protein Name** ZN140

**Organism**

Human

**Gene ID**

[7699;](#)

**UniProt ID**

[P52738;](#)

**Cellular  
Localization**

Nucleus .

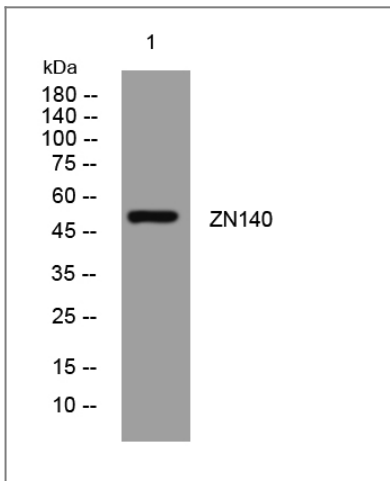
**Tissue specificity**

Seems ubiquitous. Seen in the heart, brain, placenta, lung, liver, skeletal muscle, kidney and pancreas.

**Function**

Function:May be involved in transcriptional regulation as a repressor.,similarity:Belongs to the krueppel C2H2-type zinc-finger protein family.,similarity:Contains 1 KRAB domain.,similarity:Contains 10 C2H2-type zinc fingers.,tissue specificity:Seems ubiquitous. Seen in the heart, brain, placenta, lung, liver, skeletal muscle, kidney and pancreas.,

## Validation Data



Western blot analysis of lysates from Jurkat cells, primary antibody was diluted at 1:1000, 4°over night

## Contact information

Orders: [order@immunoway.com](mailto:order@immunoway.com)  
Support: [tech@immunoway.com](mailto:tech@immunoway.com)  
Telephone: 877-594-3616 (Toll Free), 408-747-0185  
Website: <http://www.immunoway.com>  
Address: 2200 Ringwood Ave San Jose, CA 95131 USA



Please scan the QR code to access additional product information:  
**ZN140 Rabbit pAb**