

RPH3L Rabbit pAb

CatalogNo: YT6911

| Key Features

Host Species

- Rabbit

Reactivity

- Human, Mouse, Rat

Applications

- WB

MW

- 35kD (Calculated)

Isotype

- IgG

| Recommended Dilution Ratios

WB 1:500-2000

| Storage

Storage* -15°C to -25°C/1 year (Do not lower than -25°C)

Formulation Liquid in PBS containing 50% glycerol, 0.5% BSA and 0.02% sodium azide.

| Basic Information

Clonality Polyclonal

| Immunogen Information

Immunogen Synthesized peptide derived from human RPH3L AA range: 162-212

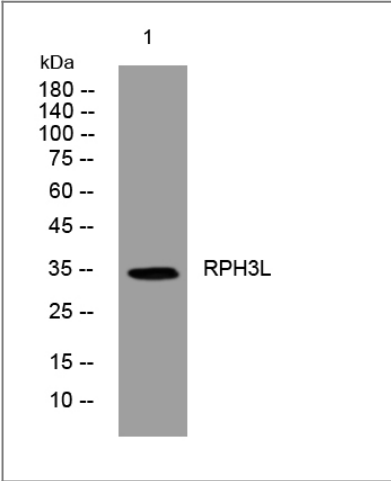
Specificity This antibody detects endogenous levels of RPH3L at Human/Mouse/Rat

| Target Information

Gene name RPH3AL NOC2

| | | | |
|------------------------------|---|-------------------------|-------------------------|
| Protein Name | RPH3L | | |
| | Organism | Gene ID | UniProt ID |
| | Human | 9501; | Q9UNE2; |
| | Mouse | 380714; | Q768S4; |
| | Rat | 171123; | O54880; |
| Cellular Localization | Cytoplasm . Cytoplasmic vesicle, secretory vesicle membrane . Recruited to the vesicle membrane in a GTP- and RAB3B-dependent manner in epithelial cells. | | |
| Tissue specificity | Moderate to high levels of expression in thyroid, ovary, stomach, heart, pancreas, skeletal muscle, kidney and liver. Also detected in epithelial cells. | | |
| Function | Domain:The N-terminus of the RabBD domain is necessary and sufficient for interaction with RAB27A.,Function:Rab GTPase effector involved in the late steps of regulated exocytosis, both in endocrine and exocrine cells (By similarity). Acts as a potential RAB3B effector protein in epithelial cells.,similarity:Contains 1 FYVE-type zinc finger.,similarity:Contains 1 RabBD (Rab-binding) domain.,subcellular location:Recruited to the vesicle membrane in a GTP-and RAB3B-dependent manner in epithelial cells.,subunit:Recruited to dense-core vesicles through specific interaction with RAB27A in endocrine cells. Interacts with RAB3A, RAB3B, RAB3C and RAB3D. Interacts with ZYX.,tissue specificity:Moderate to high levels of expression in thyroid, ovary, stomach, heart, pancreas, skeletal muscle, kidney and liver. Also detected in epithelial cells., | | |

Validation Data



Western blot analysis of lysates from SW480 cells, primary antibody was diluted at 1:1000, 4°over night

Contact information

Orders: order@immunoway.com
Support: tech@immunoway.com
Telephone: 877-594-3616 (Toll Free), 408-747-0185
Website: http://www.immunoway.com
Address: 2200 Ringwood Ave San Jose, CA 95131 USA



Please scan the QR code
to access additional
product information:
RPH3L Rabbit pAb

For Research Use Only. Not for Use in Diagnostic Procedures.

[Antibody](#) | [ELISA Kits](#) | [Protein](#) | [Reagents](#)