

## T2FA Rabbit pAb

CatalogNo: YT6890

### | Key Features

#### Host Species

- Rabbit

#### Reactivity

- Human, Mouse, Rat

#### Applications

- WB

#### MW

- 57kD (Calculated)

#### Isotype

- IgG

### | Recommended Dilution Ratios

WB 1:500-2000

### | Storage

**Storage\*** -15°C to -25°C/1 year (Do not lower than -25°C)

**Formulation** Liquid in PBS containing 50% glycerol, 0.5% BSA and 0.02% sodium azide.

### | Basic Information

**Clonality** Polyclonal

### | Immunogen Information

**Immunogen** Synthesized peptide derived from human T2FA AA range: 462-512

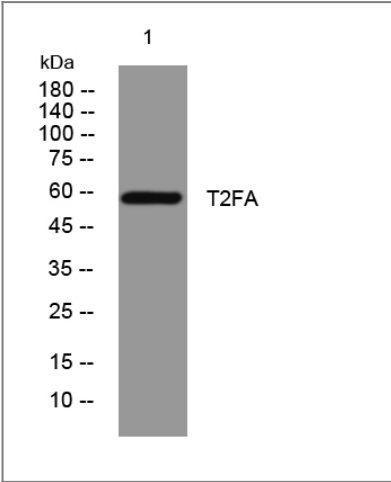
**Specificity** This antibody detects endogenous levels of T2FA at Human/Mouse/Rat

### | Target Information

**Gene name** GTF2F1 RAP74

<b>Protein Name</b>	T2FA		
	<b>Organism</b>	<b>Gene ID</b>	<b>UniProt ID</b>
	Human	<a href="#">2962;</a>	<a href="#">P35269;</a>
	Mouse	<a href="#">98053;</a>	<a href="#">Q3THK3;</a>
	Rat	<a href="#">316123;</a>	<a href="#">Q6AY96;</a>
<b>Cellular Localization</b>	Nucleus.		
<b>Function</b>	Caution:Was reported (PubMed:10428810) to have a protein kinase activity and to autophosphorylates on Ser-385 and Thr-389.,Function:TFIIF is a general transcription initiation factor that binds to RNA polymerase II and helps to recruit it to the initiation complex in collaboration with TFIIB. It promotes transcription elongation.,PTM:Phosphorylated on Ser and other residues by TAF1 and casein kinase II-like kinases.,similarity:Belongs to the TFIIF alpha subunit family.,subunit:Heterodimer of an alpha and a beta subunit. Interacts with GTF2F2 and CTDPI. Interacts with TAF6/TAFII80.,		

Validation Data



Western blot analysis of lysates from HpeG2 cells, primary antibody was diluted at 1:1000, 4°over night

Contact information

Orders: order@immunoway.com  
Support: tech@immunoway.com  
Telephone: 877-594-3616 (Toll Free), 408-747-0185  
Website: http://www.immunoway.com  
Address: 2200 Ringwood Ave San Jose, CA 95131 USA



Please scan the QR code to access additional product information:  
**T2FA Rabbit pAb**

