

TRM6 Rabbit pAb

CatalogNo: YT6887

| Key Features

Host Species

- Rabbit

Reactivity

- Human, Mouse

Applications

- WB

MW

- 55kD (Calculated)

Isotype

- IgG

| Recommended Dilution Ratios

WB 1:500-2000

| Storage

Storage* -15°C to -25°C/1 year (Do not lower than -25°C)

Formulation Liquid in PBS containing 50% glycerol, 0.5% BSA and 0.02% sodium azide.

| Basic Information

Clonality Polyclonal

| Immunogen Information

Immunogen Synthesized peptide derived from human TRM6 AA range: 175-225

Specificity This antibody detects endogenous levels of TRM6 at Human/Mouse

| Target Information

Gene name TRMT6 KIAA1153 TRM6 CGI-09

Protein Name TRM6

Organism

Gene ID

UniProt ID

Human

[51605;](#)

[Q9UJA5;](#)

Mouse

[66926;](#)

[Q8CE96;](#)

**Cellular
Localization**

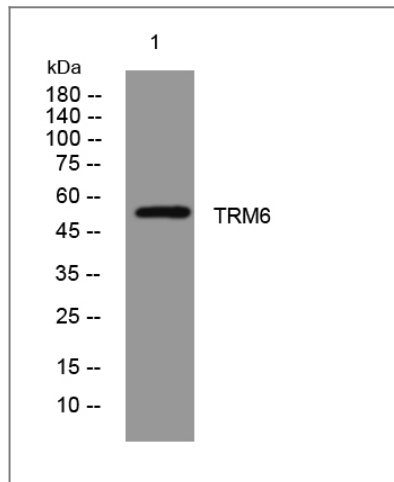
Nucleus .

Tissue specificity Expressed in brain, liver, testis and ovary.

Function

Function:Substrate-binding subunit of tRNA (adenine-N(1)-)-methyltransferase, which catalyzes the formation of N(1)-methyladenine at position 58 (m1A58) in initiator methionyl-tRNA.,PTM:Phosphorylated upon DNA damage, probably by ATM or ATR.,similarity:Belongs to the TRM6/GCD10 family.,subunit:tRNA (adenine-N(1)-)-methyltransferase is a heterodimer of trm6 and trm61.,tissue specificity:Expressed in brain, liver, testis and ovary.,

Validation Data



Western blot analysis of lysates from MCF-7 cells, primary antibody was diluted at 1:1000, 4° over night

Contact information

Orders: order@immunoway.com
Support: tech@immunoway.com
Telephone: 877-594-3616 (Toll Free), 408-747-0185
Website: <http://www.immunoway.com>
Address: 2200 Ringwood Ave San Jose, CA 95131 USA



Please scan the QR code to access additional product information:
TRM6 Rabbit pAb

