

NOVA2 Rabbit pAb

CatalogNo: YT6879

Key Features

Host Species

- Rabbit

Reactivity

- Human, Mouse

Applications

- WB

MW

- 54kD (Calculated)

Isotype

- IgG

Storage

Storage* -15°C to -25°C/1 year (Do not lower than -25°C)**Formulation** Liquid in PBS containing 50% glycerol, 0.5% BSA and 0.02% sodium azide.

Recommended Dilution Ratios

WB 1:500-2000

Basic Information

Clonality Polyclonal

Immunogen Information

Immunogen Synthesized peptide derived from human NOVA2 AA range: 274-324**Specificity** This antibody detects endogenous levels of NOVA2 at Human

Target Information

Gene name NOVA2 ANOVA NOVA3

Protein Name NOVA2

Organism

Human

Gene ID

[4858;](#)

UniProt ID

[Q9UNW9;](#)

Cellular Localization

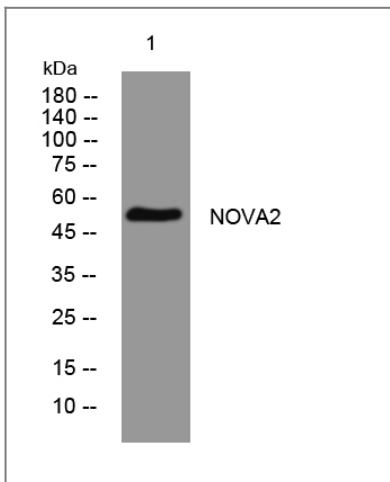
Nucleus .

Tissue specificity Brain. Expression restricted to astrocytes.

Function

Disease:Autoantigen in the paraneoplastic opsoclonus myoclonus ataxia (POMA), a paraneoplastic neurological syndrome/disorder (PNS/D) associated with breast cancer, fallopian cancer, and SCLCa and characterized primarily by loss of inhibitory control of motor neurons in the spinal cord and brainstem. Recognized by the IgG autoantibody ANNA-2 (also called anti-Ri).,Domain:The third KH domain (KH3) recognizes specifically 5'-UCAAY-3'.,Function:May regulate RNA splicing or metabolism in a specific subset of developing neurons (By similarity). Binds single strand RNA.,similarity:Contains 3 KH domains.,subunit:Interacts with PTBP2.,tissue specificity:Brain. Expression restricted to astrocytes.,

Validation Data



Western blot analysis of lysates from HeLa cells, primary antibody was diluted at 1:1000, 4°C over night

Contact information

Orders: order@immunoway.com
Support: tech@immunoway.com
Telephone: 877-594-3616 (Toll Free), 408-747-0185
Website: <http://www.immunoway.com>
Address: 2200 Ringwood Ave San Jose, CA 95131 USA



Please scan the QR code to access additional product information:
NOVA2 Rabbit pAb

