

KR132 Rabbit pAb

CatalogNo: YT6868

Key Features

Host Species

- Rabbit

Reactivity

- Human

Applications

- WB, IHC

MW

- 19kD (Calculated)

Isotype

- IgG

Recommended Dilution Ratios

WB 1:500-2000

IHC 1:50-300

Storage

Storage* -15°C to -25°C/1 year (Do not lower than -25°C)

Formulation Liquid in PBS containing 50% glycerol, 0.5% BSA and 0.02% sodium azide.

Basic Information

Clonality Polyclonal

Immunogen Information

Immunogen Synthesized peptide derived from human KR132 AA range: 42-92

Specificity This antibody detects endogenous levels of KR132 at Human

Target Information

Gene name KRTAP13-2 KAP13.2

Protein Name KR132

Organism

Human

Gene ID

[337959;](#)

UniProt ID

[Q52LG2;](#)

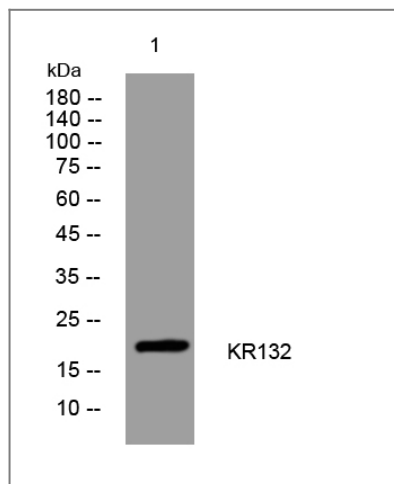
**Cellular
Localization**

intermediate filament,

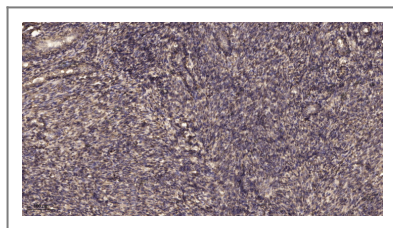
Function

Function:In the hair cortex, hair keratin intermediate filaments are embedded in an interfilamentous matrix, consisting of hair keratin-associated proteins (KRTAP), which are essential for the formation of a rigid and resistant hair shaft through their extensive disulfide bond cross-linking with abundant cysteine residues of hair keratins. The matrix proteins include the high-sulfur and high-glycine-tyrosine keratins.,similarity:Belongs to the PMG family.,subunit:Interacts with hair keratins.,

Validation Data



Western blot analysis of lysates from HpeG2 cells, primary antibody was diluted at 1:1000, 4° over night



Immunohistochemical analysis of paraffin-embedded human uterus. 1, Antibody was diluted at 1:200(4° overnight). 2, Tris-EDTA,pH9.0 was used for antigen retrieval. 3,Secondary antibody was diluted at 1:200(room temperature, 45min).

Contact information

Orders: order@immunoway.com
Support: tech@immunoway.com
Telephone: 877-594-3616 (Toll Free), 408-747-0185
Website: <http://www.immunoway.com>
Address: 2200 Ringwood Ave San Jose, CA 95131 USA



Please scan the QR code to access additional product information:
KR132 Rabbit pAb

