

CLH2 Rabbit pAb

CatalogNo: YT6854

| Key Features

Host Species

- Rabbit

Reactivity

- Human

Applications

- WB

MW

- 180kD (Calculated)

Isotype

- IgG

| Recommended Dilution Ratios

WB 1:500-2000

| Storage

Storage*

-15°C to -25°C/1 year(Do not lower than -25°C)

Formulation

Liquid in PBS containing 50% glycerol, 0.5% BSA and 0.02% sodium azide.

| Basic Information

Clonality

Polyclonal

| Immunogen Information

Immunogen

Synthesized peptide derived from human CLH2 AA range: 893-943

Specificity

This antibody detects endogenous levels of CLH2 at Human

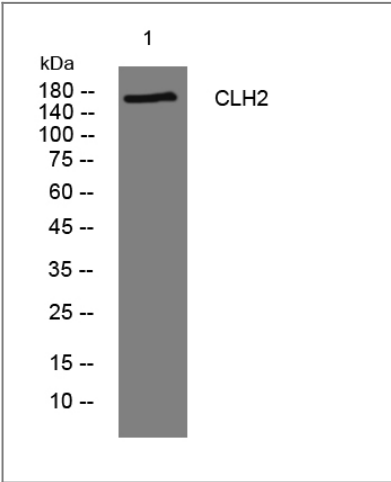
| Target Information

Gene name

CLTCL1 CLH22 CLTCL CLTD

Protein Name	CLH2		
	Organism	Gene ID	UniProt ID
	Human	8218;	P53675;
Cellular Localization	Cytoplasmic vesicle membrane ; Peripheral membrane protein ; Cytoplasmic side . Membrane, coated pit ; Peripheral membrane protein ; Cytoplasmic side . Cytoplasmic face of coated pits and vesicles. .		
Tissue specificity	Maximal levels in skeletal muscle. High levels in heart and testis. Low expression detected in all other tissues.		
Function	Disease:May play a role in the hypotonia seen in velo-cardio-facial syndrome (VCFS).,Domain:The C-terminal third of the heavy chains forms the hub of the triskelion. This region contains the trimerization domain and the light-chain binding domain involved in the assembly of the clathrin lattice.,Function:Clathrin is the major protein of the polyhedral coat of coated pits and vesicles. Two different adapter protein complexes link the clathrin lattice either to the plasma membrane or to the trans-Golgi network.,similarity:Belongs to the clathrin heavy chain family.,subcellular location:Cytoplasmic face of coated pits and vesicles.,subunit:Clathrin triskelions, composed of 3 heavy chains and 3 light chains, are the basic subunits of the clathrin coat. In the presence of light chains, hub assembly is influenced by both the pH and the concentration of calcium.,tissue specificity:Maximal levels in skeletal muscle. High levels in heart and testis. Low expression detected in all other tissues.,		

Validation Data



Western blot analysis of lysates from A431 cells, primary antibody was diluted at 1:1000, 4°over night

Contact information

Orders: order@immunoway.com
Support: tech@immunoway.com
Telephone: 877-594-3616 (Toll Free), 408-747-0185
Website: http://www.immunoway.com
Address: 2200 Ringwood Ave San Jose, CA 95131 USA



Please scan the QR code
to access additional
product information:
CLH2 Rabbit pAb

For Research Use Only. Not for Use in Diagnostic Procedures.

[Antibody](#) | [ELISA Kits](#) | [Protein](#) | [Reagents](#)