

## PLEK Rabbit pAb

CatalogNo: YT6848

### Key Features

#### Host Species

- Rabbit

#### Reactivity

- Human, Mouse, Rat

#### Applications

- WB, ELISA, IHC

#### MW

- 39kD (Calculated)

#### Isotype

- IgG

### Recommended Dilution Ratios

WB 1:500-2000

IHC 1:50-300

ELISA 1:2000-20000

### Storage

#### Storage\*

-15°C to -25°C/1 year (Do not lower than -25°C)

#### Formulation

Liquid in PBS containing 50% glycerol, 0.5% BSA and 0.02% sodium azide.

### Basic Information

#### Clonality

Polyclonal

### Immunogen Information

#### Immunogen

Synthesized peptide derived from human PLEK AA range: 99-149

#### Specificity

This antibody detects endogenous levels of PLEK at Human/Mouse/Rat

### Target Information

#### Gene name

PLEK P47

**Protein Name** PLEK

Organism	Gene ID	UniProt ID
Human	<a href="#">5341;</a>	<a href="#">P08567;</a>
Mouse	<a href="#">56193;</a>	<a href="#">Q9JHK5;</a>
Rat	<a href="#">364206;</a>	<a href="#">Q4KM33;</a>

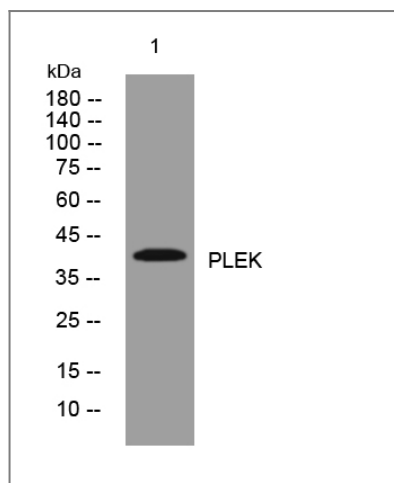
**Cellular Localization**

extracellular region,cytoplasm,cytosol,membrane,ruffle membrane,

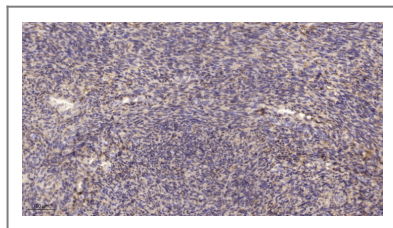
**Function**

Function:Major protein kinase C substrate of platelets, its exact function is not known.,similarity:Contains 1 DEP domain.,similarity:Contains 2 PH domains.,

## Validation Data



Western blot analysis of lysates from A549 cells, primary antibody was diluted at 1:1000, 4° over night



Immunohistochemical analysis of paraffin-embedded human uterus. 1, Antibody was diluted at 1:200(4° overnight). 2, Tris-EDTA,pH9.0 was used for antigen retrieval. 3,Secondary antibody was diluted at 1:200(room temperature, 45min).

## Contact information

Orders: [order@immunoway.com](mailto:order@immunoway.com)  
Support: [tech@immunoway.com](mailto:tech@immunoway.com)  
Telephone: 877-594-3616 (Toll Free), 408-747-0185  
Website: <http://www.immunoway.com>  
Address: 2200 Ringwood Ave San Jose, CA 95131 USA



Please scan the QR code to access additional product information:  
**PLEK Rabbit pAb**

