

## BEX2 Rabbit pAb

CatalogNo: YT6847

Orthogonal Validated 

### Key Features

#### Host Species

- Rabbit

#### Reactivity

- Human, Mouse, Rat

#### Applications

- WB

#### MW

- 14kD (Calculated)

#### Isotype

- IgG

### Recommended Dilution Ratios

**WB 1:500-2000**

### Storage

**Storage\*** -15°C to -25°C/1 year (Do not lower than -25°C)**Formulation** Liquid in PBS containing 50% glycerol, 0.5% BSA and 0.02% sodium azide.

### Basic Information

**Clonality** Polyclonal

### Immunogen Information

**Immunogen** Synthesized peptide derived from human BEX2 AA range: 28-78**Specificity** This antibody detects endogenous levels of BEX2 at Human/Mouse/Rat

### Target Information

**Gene name** BEX2

**Protein Name** BEX2

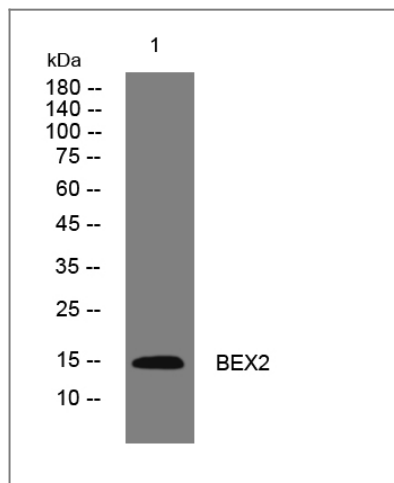
Organism	Gene ID	UniProt ID
Human	<a href="#">84707;</a>	<a href="#">Q9BXY8;</a>
Mouse	<a href="#">12069;</a>	<a href="#">Q9WTZ8;</a>
Rat	<a href="#">363498;</a>	<a href="#">Q3MKQ1;</a>

**Cellular Localization** Cytoplasm . Nucleus .

**Tissue specificity** Expressed in central nervous system, with high level in pituitary, cerebellum and temporal lobe. Widely expressed in breast cancer cell lines.

**Function** Caution:Was named BEX1 by some authors.,similarity:Belongs to the BEX family.,subunit:Interacts with OMP (By similarity). Interacts with LMO2, possibly leading to regulate the transcriptional activity of a DNA-binding complex containing LMO2.,tissue specificity:Expressed in central nervous system, with high level in pituitary, cerebellum and temporal lobe.,

## Validation Data



Western blot analysis of lysates from HpeG2 cells, primary antibody was diluted at 1:1000, 4°over night

## Contact information

Orders: [order@immunoway.com](mailto:order@immunoway.com)  
Support: [tech@immunoway.com](mailto:tech@immunoway.com)  
Telephone: 877-594-3616 (Toll Free), 408-747-0185  
Website: <http://www.immunoway.com>  
Address: 2200 Ringwood Ave San Jose, CA 95131 USA



Please scan the QR code to access additional product information:  
**BEX2 Rabbit pAb**

