

NAA20 Rabbit pAb

CatalogNo: YT6829

Key Features

Host Species

- Rabbit

Reactivity

- Human, Mouse

Applications

- WB, ELISA, IHC

MW

- 20kD (Calculated)

Isotype

- IgG

Recommended Dilution Ratios

WB 1:500-2000**IHC 1:50-300****ELISA 1:2000-20000**

Storage

Storage*

-15°C to -25°C/1 year(Do not lower than -25°C)

Formulation

Liquid in PBS containing 50% glycerol, 0.5% BSA and 0.02% sodium azide.

Basic Information

Clonality

Polyclonal

Immunogen Information

Immunogen

Synthesized peptide derived from human NAA20 AA range: 93-143

Specificity

This antibody detects endogenous levels of NAA20 at Human/Mouse

Target Information

Gene name

NAA20 NAT5

Protein Name NAA20

Organism

Gene ID

UniProt ID

Human

[51126;](#)

[P61599;](#)

Mouse

[67877;](#)

[P61600;](#)

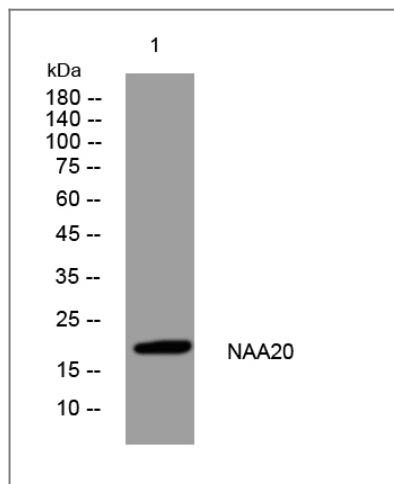
**Cellular
Localization**

Cytoplasm . Nucleus .

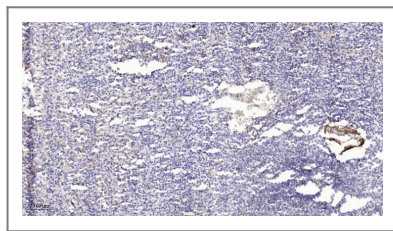
Function

Function: Seems to be involved in N-acetylation., similarity: Belongs to the acetyltransferase family. ARD1 subfamily., similarity: Contains 1 N-acetyltransferase domain.,

Validation Data



Western blot analysis of lysates from 3T3 cells, primary antibody was diluted at 1:1000, 4° over night



Immunohistochemical analysis of paraffin-embedded human spleen. 1, Antibody was diluted at 1:200 (4° overnight). 2, Tris-EDTA, pH 9.0 was used for antigen retrieval. 3, Secondary antibody was diluted at 1:200 (room temperature, 45 min).

Contact information

Orders: order@immunoway.com
Support: tech@immunoway.com
Telephone: 877-594-3616 (Toll Free), 408-747-0185
Website: <http://www.immunoway.com>
Address: 2200 Ringwood Ave San Jose, CA 95131 USA



Please scan the QR code to access additional product information:
NAA20 Rabbit pAb

