

## CMPK2 Rabbit pAb

CatalogNo: YT6811

### Key Features

#### Host Species

- Rabbit

#### Reactivity

- Human, Mouse

#### Applications

- WB

#### MW

- 49kD (Calculated)

#### Isotype

- IgG

### Recommended Dilution Ratios

WB 1:500-2000

### Storage

**Storage\*** -15°C to -25°C/1 year (Do not lower than -25°C)

**Formulation** Liquid in PBS containing 50% glycerol, 0.5% BSA and 0.02% sodium azide.

### Basic Information

**Clonality** Polyclonal

### Immunogen Information

**Immunogen** Synthesized peptide derived from human CMPK2 AA range: 57-107

**Specificity** This antibody detects endogenous levels of CMPK2 at Human/Mouse

### Target Information

**Gene name** CMPK2

**Protein Name** CMPK2

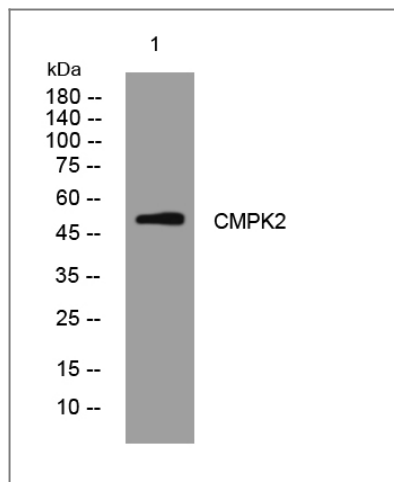
Organism	Gene ID	UniProt ID
Human	<a href="#">129607</a> ;	<a href="#">Q5EBM0</a> ;
Mouse	<a href="#">22169</a> ;	<a href="#">Q3U5Q7</a> ;

**Cellular Localization** Mitochondrion .

**Tissue specificity** Among all investigated tumors, leukemia cells show the most abundant expression.

**Function** Catalytic activity:ATP + (d)CMP = ADP + (d)CDP.,Function:May participate in dUTP and dCTP synthesis in mitochondria. Is able to phosphorylate dUMP, dCMP, CMP, UMP and monophosphates of the pyrimidine nucleoside analogs ddC, dFdC, araC, BVDU and FdUrd with ATP as phosphate donor. Efficacy is highest for dUMP followed by dCMP; CMP and UMP are poor substrates. May be involved in mtDNA depletion caused by long term treatment with ddC or other pyrimidine analogs.,similarity:Belongs to the thymidylate kinase family.,tissue specificity:Among all investigated tumors, leukemia cells show the most abundant expression.,

## Validation Data



Western blot analysis of lysates from DU145 cells, primary antibody was diluted at 1:1000, 4° over night

## Contact information

Orders: [order@immunoway.com](mailto:order@immunoway.com)  
Support: [tech@immunoway.com](mailto:tech@immunoway.com)  
Telephone: 877-594-3616 (Toll Free), 408-747-0185  
Website: <http://www.immunoway.com>  
Address: 2200 Ringwood Ave San Jose, CA 95131 USA



Please scan the QR code to access additional product information:  
**CMPK2 Rabbit pAb**

